



Electronic Service Manuals

This electronic document is provided as a service to our customers. We do not create the contents of the information contained in this document. Should you have detailed questions pertaining to the information contained in this document, you may contact Michco, or the manufacturer which provided the original information in this electronic deliverable. Michco's only part in this electronic deliverable was the electronic assembly process.

You may contact Michco through the following methods:
Phone (517) 484-9312 or (800) 331-3339 MI, OH, IN only
2011 N. High St. -- Lansing, Michigan -- 48906
Fax: (517) 484-9836
Email: CustServ@Michco.com
Web site: www.Michco.Com
Parts Web site: www.FloorMachineParts.Com

Order Parts on Line at:
www.FloorMachineParts.Com

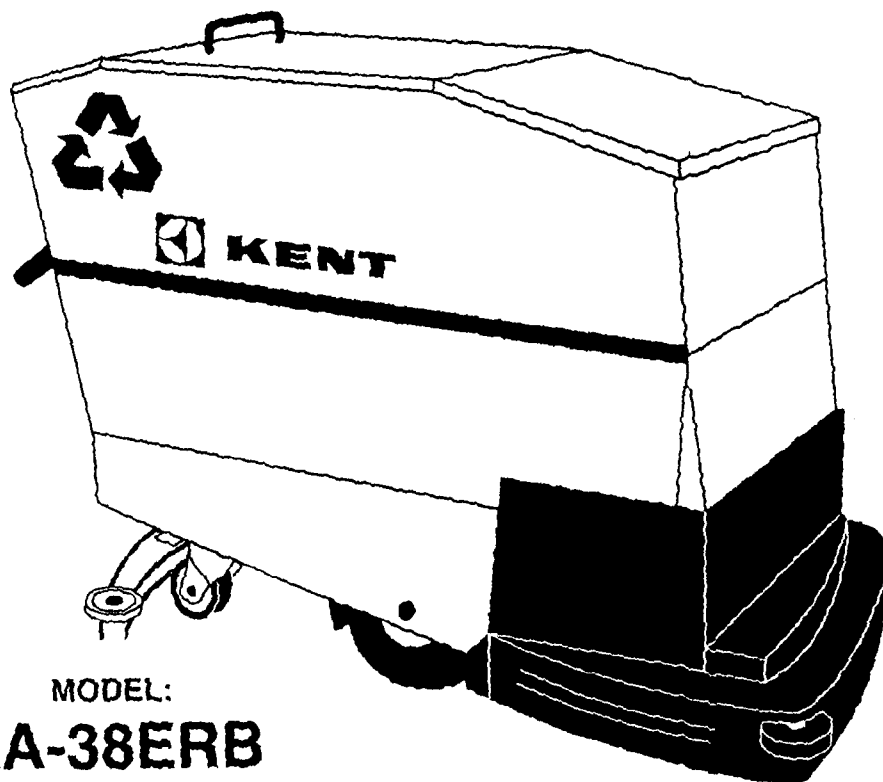
Directly to Parts & Service:
By Email: **Shop@Michco.com**
By Fax: (517) 702-2041
By Voice: Use numbers above.

Serving the Cleaning Industry Since 1922

Notice: All copyrighted material remains property of original owners, all trademarks are property of respective owners. Manuals are subject to Manufacturer's reproduction limitations. Originals or reproductions were provided by manufacturers through a request. We make no warranty as to the correctness of information provided in this document and you assume all risk.



KENT



MODEL:

KA-38ERB RECYCLING AUTOMATIC SCRUBBERVAC

THE KENT COMPANY
P.O. Box 1665
2310 Industrial Parkway
Elkhart, IN 46515
TEL: (219)293-8661,
(800)334-1083
FAX: (219)295-8610
TELEX: 25-8331 KENT CO EKR

OPERATING, MAINTENANCE INSTRUCTIONS & ILLUSTRATED PARTS LIST

JANUARY 1993

MACHINE SPECIFICATIONS:

KA-38ERB

| | |
|-------------------------|--|
| CONTROLS | Light effort push/pull for forward or reverse operation. All switches, manual water control, and manual brush lift lever easy to reach, hand operable |
| TRACTION MTR | 36V, 3/4HP, 700 RPM Permanent Magnet type |
| VACUUM MTR | 36V, 1-1/4HP, 3-stage bypass type |
| BRUSH DRV MTRS (2) | 36V 1HP, 195 RPM Permanent Magnet type gear motor Direct Drive to self-leveling brushes |
| TRACTION DRIVE | Chain direct drive to differential |
| BRUSHES | Dual 20" (50.8 cm) dia, self-leveling counter-rotating, 195RPM |
| SCRUBBING WIDTH | 38" (96.5 cm) |
| BRUSH PRESSURE | 115 lbs (48 kg) floating 200 lbs (73 kg) strip |
| TANK | 25 gal capacity, high density, molded seamless linear polyethylene with 2" (5.1 cm) dump valve |
| BATTERIES | Six heavy-duty deep cycle type, 6V, 270AH series connected |
| SQUEEGEE | 43 3/2" (110.0 cm) wide, swinger type with cast-in vacuum tube, easily replaceable gum rubber blades (reversible for extended wear), arcuate shape, tracking center wheel design |
| WHEELS | Two 11" (27.9 cm) dia pneumatic traction tires - front Foam filled Two 5" (12.7 cm) dia polyurethane swivels - rear |
| SOLUTION FEED | Adjustable flow rate to center of each brush |
| FOAM / WATER SENSOR | Electronic circuit with stainless steel probes |
| FRAME | All welded steel 1/4" (0.6 cm) flat plates, angle and square stock |
| OUTER SHELL | All exterior panels 16 Ga brushed stainless steel |
| BRUSH COVER | High density molded seamless linear polyethylene |
| BATTERY CHARGER | Exterior - Electronic, 20 Amp, 36V |
| LENGTH (OVERALL) | 65 5/8" (166.4 cm) |
| HEIGHT (OVERALL) | 39 5/8" (100.3 cm) |
| WIDTH (BODY) | 25 5/8" (64.8 cm) |
| WIDTH (BRSH CVR) | 41 25/8" (104.8 cm) |
| WIDTH (SQUEEGEE) | 43 3/2" (110 cm) |
| WEIGHT (MACH W/BATTS) | 1,075 lbs (487.5 Kg) |
| WEIGHT (CHARGER) | 22 lbs (9.9 kg) |
| SHIPPING WEIGHT (TOTAL) | 1,428 lbs (648.1 Kg) |

ACCESSORIES

KA-38ERB

| | |
|--|-------|
| PADHOLDER (LEFT HAND THRD) | 20378 |
| PADHOLDER SERVICE PARTS: | |
| CENTER PLATE (ATTACHED)(LH) | 39390 |
| CLAMPING PLATE (LOOSE)(LH) | 39391 |
| | |
| PADHOLDER (RIGHT HAND THRD) | 20364 |
| PADHOLDER SERVICE PARTS: | |
| CENTER PLATE (ATTACHED)(RH)..... | 38881 |
| CLAMPING PLATE (LOOSE)(RH)..... | 38882 |
| | |
| STRIP PAD | 15682 |
| SCRUB PAD | 15649 |
| POLISH PAD..... | 15646 |
| | |
| SCRUB BRUSH | 20365 |
| POLISH BRUSH | 20366 |
| POLYPROPYLENE BRUSH | 20367 |
| STEEL WIRE BRUSH..... | 20368 |
| KEN-GRIT BRUSH | 20370 |
| | |
| MICROSTAT FILTER KIT | 38303 |
| | |
| BATTERY: | |
| WET | 27048 |
| DRY..... | 27100 |
| CHARGERS: | |
| 120V 60HZ | 31360 |
| 100V 50HZ | 31361 |
| 230V 50HZ | 31362 |
| 230V 60HZ | 31364 |
| | |
| DUMP HOSE KIT | 38369 |
| DUMP HOSE INSTALLED | 38828 |
| BUMPER ROLLER KIT | 38641 |
| | |
| KEYLOCK SWITCH KIT | 25295 |
| NEOPRENE SQUEEGEE BLADE | 39203 |
| SQUEEGEE BLADE SET (GUM RUBBER)..... | 39204 |
| | |
| FILTER BAG, MEDIUM-DUTY, 25 MICRON | 49853 |
| FILTER BAG, HEAVY-DUTY, 50 MICRON .. | 55591 |
| FILTER CARTRIDGE, EXTRA-LIGHT-DUTY, 5 MICRON | 49867 |
| FILTER CARTRIDGE, LIGHT-DUTY, 10 MICRON | 49870 |
| FILTER CARTRIDGE, MEDIUM-DUTY, 30 MICRON | 55592 |
| FILTER CARTRIDGE, HEAVY-DUTY, 50 MICRON..... | 55593 |

INTRODUCTION

Your automatic has been especially engineered and manufactured to give the maximum in performance during scrubbing and polishing of large floor areas

With careful maintenance according to the instructions outlined in the following pages, a high standard of operation throughout its use will be insured

Carefully inspect all components to insure that there is no concealed freight damage. If such damage is discovered, file a "CONCEALED DAMAGE REPORT" immediately with the delivering carrier.

The contents of this manual are based on the latest product information available at the time of publication. The right is reserved to make changes at any time without notice, in materials, equipment, price, color, specifications and models.



CAUTION:

IMPORTANT SAFEGUARDS: ACCIDENTS DUE TO MISUSE CAN ONLY BE PREVENTED BY THOSE USING THE MACHINE. TO GUARD AGAINST INJURY, BASIC SAFETY PRECAUTIONS AS SHOWN IN THIS MANUAL SHOULD BE OBSERVED.

READ AND FOLLOW ALL SAFETY INSTRUCTIONS.

| | | |
|-------------------------------------|-------|----|
| THE KENT CO ELKHART, INDIANA USA | | |
| SERIAL NO | MODEL | |
| VOLTS | PHASE | Hz |
| MOTOR 1 | AMP | Hz |
| MOTOR 2 | AMP | Hz |

The model, type and serial number are indicated on the data plate. For prompt and complete information, always refer to these numbers when inquiring about service.

| | |
|--|----------|
| Write the model and serial number of your unit in the space provided Refer to the rating plate on unit | |
| MODEL # | SERIAL # |
| Retain this owner's manual for future reference | |

INITIAL MACHINE PREPARATION

Lift the front lid of the machine. Lift the cartridge filter units out of their carrier. Place or hang the units off of the front panel of the

machine by using the support hook between the filters. Next, remove the lower portions of the chambers. Insert the woven cotton filter cartridge in each chamber. When threading the upper and lower parts of the filter together make sure that the filter seats properly

Remove the tank cover. From here, the filter sock retainer can be seen. To replace filter sock, remove filter sock retainer and sock by twisting unit back and forth until it becomes loose from elbow as shown in Figure 1



Figure 1

Once removed, place new sock over the vac tube and outer guide of the retainer while keeping the cloth handle outside and to the top of the retainer. After the sock is seated up against the lip on the retainer, tighten adjustable ring clamp to secure the sock. Replace unit back into the machine making sure that the sock drops back into the tank. Make sure the retainer is properly aligned on the connecting elbow as shown in Figure 2.

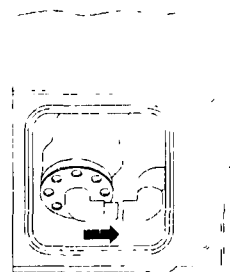


Figure 2

Fill the tank with water to the top surface of the filter as shown in Figure 3.

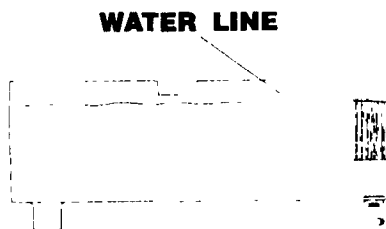


Figure 3

Reinstall tank cover and filter unit.

Fill soap/cleaner reservoir with a super-concentrated type cleaner only. Dilute to a water like viscosity. The ratio of cleaner to water solution can be regulated by the valve in line with the reservoir. NOTE: A LOW RATIO IS NORMALLY DESIRED, AS THIS WILL CONSERVE CLEANER. At initial startup, the soap solution must be purged for proper flow. This is accomplished by turning the soap knob past the lowest setting with the pump "ON" and the water flow on "MAX". Once a soaping solution is noticed at the brushes, reduce the soap ratio to the desired setting.

CONTROL PANEL



Figure 4

1. Battery meter. The needle must be within the GREEN area for efficient operation.
2. Main DRIVE "ON/OFF" switch with red indicator light.
3. "ON/OFF" switch for VACUUM motor. Red light indicates a full main tank.
4. "ON/OFF" switch for pump motor.
5. Water flow control "MAX/MIN".
6. Variable speed control knob may be used to vary the speed of the machine from 0-250 feet per minute.
7. Brush Up/Down control switch with red indicator light.
8. Brush load indicator. The needle must be out of the red area.

NOTE: The pump will operate only if the drive switch is "ON". Once the drive switch is "ON" the pump switch may be utilized. Flow rate is regulated by turning the handle marked "WATER".

MOTOR PROTECTION

There are three circuit breakers located on the rear panel of the machine directly beneath the traction control handles. These circuit breakers protect the motors in your machine by shutting them off in the event that they become over-

heated during operation. There is one circuit breaker to protect the brush drive motors, one to protect the traction drive motor, and one to protect the vacuum motor. If any of these motors will not turn on during operation check to see if one of the circuit breaker buttons has popped out. If so, once the motor has been allowed to cool for a moment push the button in and resume operation.

TRACTION DRIVE OPERATION



Figure 5

To move the machine in forward or reverse, first push the drive switch to "ON". The forward motion of the machine is controlled by squeezing the control bar (Figure 5) until the traction motor is engaged. Once engaged, the speed of the machine may be increased or decreased by turning the speed control knob on the far right of the instrument panel. To increase the speed of the machine, turn the knob clockwise. To reduce the speed, turn the knob counter-clockwise. Reverse motion is controlled by pulling the control rod backwards until the motor is engaged in reverse. The machine is equipped with a differential drive for easy turning in either direction.

SQUEEGEE OPERATION

On the rear panel, the right handle raises and lowers the squeegee. To raise the squeegee, pull the handle up and set it on the top of the ramp.

Push the squeegee handle down to lower the squeegee. This automatic is equipped with a squeegee which is capable of swinging nine (9") inches to either side of the machine. This permits picking up of water on a turn because the squeegee will follow the pattern of the brushes. When up against a wall, the squeegee will ride tight to it until the machine pulls away

Should the squeegee encounter an obstruction, it will shift laterally until the obstruction has been passed.

BRUSH CONTROL

To start and lower brushes:

1. Push drive switch "ON."
2. Press the brush control switch "down" until the brush load indicator needle is in the white "float" zone. Brush drive motors and indicator light come on automatically.

3. For strip pressure, press and hold the brush control switch "down" until the brush load indicator is in the green "strip" zone.

4. To raise the brushes, press and hold the brush control switch "up" until the brush motors stop and the indicator light goes off.

INSTALLING THE BRUSHES



CAUTION:

PLACE MAIN SWITCH IN OFF POSITION BEFORE APPROACHING BRUSH COVER.

The automatics come equipped with two scrub brushes which mount to the brush drive as follows:

Each brush has three (3) lugs located around a hole.

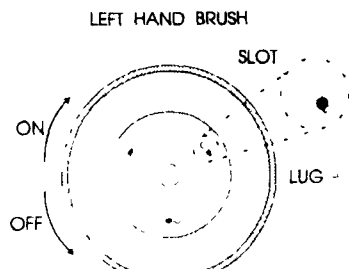


Figure 6

To install brushes:

1. Raise the brush mechanism to full up position.
2. Remove brush cover by loosening two black knobs at front of machine.
3. There are two aluminum pins chained to the two traction motors. Insert each pin through the holes provided in the brush head plate.

4. Under each brush drive pulley is a slotted brush drive plate. Place the three (3) lugs on brush into the slotted brush drive plate

5. Raise and rotate each brush with a sharp jerk toward the side of the machine. This will lock the brush lugs into the drive plate.

6. Remove the aluminum pins, turn them over and store in holes in brush plate. **Failure to remove pins will result in circuit breaker tripping or damage to the brush head.**

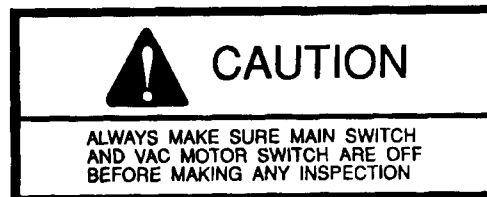
SOLUTION TANK

Being a Recycle unit, the recovery and the solution tanks are combined into one tank. For access to the tank, raise the lid at the front of the machine. **DO NOT USE HOT WATER OVER 125 DEGREES FAHRENHEIT**

VACUUM MOTOR AND LINT FILTER

The vacuum motor and lint filter are located in the vac well of the main tank. To inspect:

1. Turn off all switches.
2. Disconnect the vacuum motor plug.
3. Remove the two (2) vacuum motor tie down screws.
4. Lift the vacuum motor and filter off the two (2) studs.
5. Remove the motor filter and clean the foam material and any lint on motor fan or louvers.



MICROSTAT FILTER

(Optional) Package of 12 (Part 38303)

Installation:

1. Remove the vacuum motor as in steps 1 thru 4 in instructions under Vacuum Motor.
2. Place the Microstat Filter into the vacuum motor pot. Be sure to cover the entire gasket that is on the bottom of the pot. Replace and secure the vacuum motor.

SCRUBBING OPERATIONS

To apply solution to the floor, scrub and immediately recover the liquid and soil. The following sequence of operations is followed:

1. Press the main drive switch to the "ON" position.
2. Turn pump motor "ON".
3. Turn the vacuum switch "ON".
4. Lower the squeegee.
5. Turn water knob to desired flow rate.
6. Lower the brushes to the desired position; brush drive motors automatically turn "ON".
7. Squeeze the control rod for forward motion. Various speeds of forward or reverse motion can be obtained by changes in force on the central rod. An infinite number of speeds are available. **DO NOT REVERSE MACHINE WITH SQUEEGEE DOWN.**
8. If the unit is used periodically, between filling and emptying, the soap and water valves must be in the "OFF" positions to stop seepage onto the floor.

TURNS IN THE NORMAL SCRUBBING PATTERN

In order to reduce an over abundance of solution during operation on sharp turns:

- (A) Turn water knob to "OFF" six (6) feet before the turn.
- (B) Return the water knob to "ON" in the middle of the turn.

Our automatics can be easily controlled and maneuvered with one hand leaving the other hand free to manipulate the water flow.

WATER/FOAM SHUTOFF AND INDICATOR LIGHT.

The Water/Foam Level Sensor, located inside the main tank, prevents water and foam from entering the vacuum motor. When water or foam surpasses the maximum level allowed by the Sensor probe, the electronic sensor will shut-off the vacuum motor and illuminate the red Vacuum Indicator Light. When this happens, it is the responsibility of the operator to either drain the excess water or to dissolve the abundance of foam. After draining or dissolving below the maximum level, the sensor must be

reset by depressing the Vacuum Reset rocker switch. Resetting the switch will reactivate the vacuum motor for continued operation.

TO DUMP SOLUTION

Go to the right side of the machine, pull up on the dump valve handle.

NOTE: Stand well away from the valve for the soil will dump very fast.

DUMP HOSE KIT

For conditions where a drain is not accessible, a dump hose kit (Part 38369) is available

VAC POT DRAIN USAGE

Your Kent Autoscrubber, particularly a recycle model, may be equipped with a Vac Pot Area Drain should excessive moisture become trapped in the vac pot area. For proper use of the vac pot drain, follow the instructions as noted. **DO NOT** let water enter the vac pot Area during filling. Should water get into the vac pot area during filling or during normal Clean Up operation, unloop the clear vinyl hose (inside tank) from the storage clamp. Lower the end of the hose until all of the water is emptied from the vac pot area. For best results, wipe the inside surface of the vac pot area dry. When finished, place the hose back in the storage clamp. If the hose is not placed in the designated storage clamp, water could enter the vac pot area through the hose.

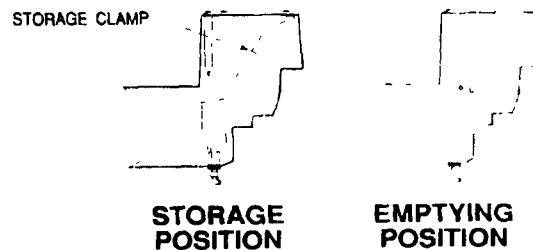


Figure 7

MACHINE CARE

Please read and follow the daily, weekly, and monthly maintenance schedule located on the underside of the lid over the battery compartment.

At the end of the day's operation, the machine should be completely cleaned and prepared for

the next shift's operations. Careful maintenance will insure effective performance throughout a long period of service.

1. Open the access to the main tank and completely rinse with clean water. If this is done at the end of each day, there will be no soil build-up to the surface of the polyethylene tank.

2. Do not store the machine with the brushes in down position because of the possible set in the brushes and possible discoloration of the floor due to moisture in the brushes.

3. Tilt the battery compartment lid full forward and inspect the battery compartment to insure that no large amount of water or solution has gathered in the battery compartment tray.

4. Remove the brushes from the machine; clean and dry them as necessary and wipe down exterior of the machine.

MAINTENANCE INSTRUCTIONS

Sock & Cartridge filter maintenance

Depending on the type and amount of dirt picked up during a normal cleaning cycle, the cartridge filters should only have to be maintained once a day. To do this, remove the cartridge filter from the chamber and clean with a pressurized stream of water on the outside and inside of the filter. This will only help prolonging the life of the cartridge and should be discarded once clogged beyond effective use.

Preventative Maintenance Program

A sound Preventative Maintenance Program will insure long, reliable and effective performance from your machine. We would strongly suggest that responsibility for the machine be assigned to a reliable individual in your organization.

DAILY

1. Clean and flush the main tank.
2. Clean lint filter on vac fan.
3. Wipe squeegee blades and machine wheels clean.
4. Wipe clean all interior and exterior surfaces.
5. Check battery water level and clean tops with damp cloth - connect battery charger.
6. Charge batteries.
7. Check pick-up tube for any obstruction.
8. Clean or replace cartridge filters.
9. Clean or replace sock filter.

10. Clean strainer screen.

WEEKLY

1. Lubricate chain and check for tension.
2. Lubricate all linkage and hinge parts. See lubrication chart.
3. Lubricate caster bearings and axle. See lubrication chart.
4. Replace Microstat Filter (where applicable).

MONTHLY

1. Check belt and chain for tension and wear. (See adjustments.)
2. Check sprockets for wear.
3. Check alignment of chain and belt.
4. Check all gaskets, vacuum motor, vacuum pot, tank inlet tube, and water valve.
5. Check proper clutch adjustments.
6. Check traction bar control spacing.
7. Check all wiring connections for cleanliness.
8. Lubricate caster bearings and axle. (See lubrication chart.)
9. Replace Microstat Filter (where applicable).
10. Clean soap injection orifices.

SIX MONTHS

1. Inspect vacuum motor carbon brushes, replace if worn to 3/8" length or less.
2. Inspect traction motor carbon brushes, replace if worn to 3/8".
3. Inspect brush drive motor carbon brushes, replace if worn to 3/8".

ADJUSTMENTS

DIFFERENTIAL CHAIN ADJUSTMENTS

1. Locate access hole on lower chassis assembly on left side of machine.
2. Loosen bolt in access hole with 1/2" socket.
3. Slide idler sprocket down until chain is snug.
4. Retighten idler sprocket bolt.

DRIVE MOTOR CHAIN ADJUSTMENTS

The drive motor chain on this automatic scrubber may be adjusted by turning the adjustment screw at the lower left-hand side of the rear of the machine (Item 2 on Lower Chassis Figure). The chain should not be sloppy, but avoid excessive tightening which can damage bearings. To tighten the chain, first loosen the four (4) motor mounting bolts, next turn the

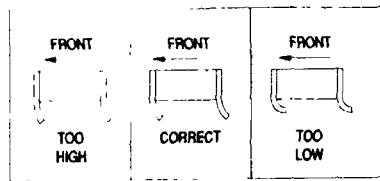


Figure 8

adjustment screw clockwise. To loosen, turn counterclockwise. Retighten motor mounting bolts.

SQUEEGEE PRESSURE ADJUSTMENT

Squeegee pressure adjustment is required if squeegee wheels will not stay on the floor when squeegee is down. At the rear of the machine, mounted directly above the traction drive motor is a nut that adjusts the squeegee pressure.

To increase squeegee pressure:

1. Use a 1/2" deep socket wrench.
2. Turn the nut clockwise to increase squeegee pressure.

NOTE: Increasing squeegee pressure will increase effort required to lift squeegee.

SQUEEGEE LIFT ADJUSTMENT

This adjustment is necessary when the squeegee will not clear the floor when the squeegee is in the "UP" position.

To adjust the squeegee higher, adjust the jam nuts on each side of the bracket at the bottom end of the squeegee cable:

1. Put the squeegee handle in the "UP" position.
2. Loosen the bottom jam nut.
3. Turn the top jam nut clockwise until the squeegee is clear of the floor.
4. Tighten the bottom jam nut to lock the squeegee position.

SQUEEGEE TILT ADJUSTMENT

The squeegee on this machine pivots freely, allowing the pressure on each end of the squeegee to keep it level with the floor at all times. The right to left tilt adjustment is automatic. Front to rear tilt adjustment is correct if, as the machine is moved forward, there is an equal amount of squeegee flare at the ends of the squeegee rubber as there is at the center. The front to rear tilt is controlled by adjusting the four (4) set screws on the squeegee mounting plate. If the squeegee flare is greater at the ends than at the center, loosen the two (2) black knobs, tighten the back two (2) set screws on the squeegee mounting plate equally and retighten the black knobs. If the squeegee flare is less at

the ends than at the center, loosen the black knobs, tighten the front two (2) set screws on the squeegee mounting plate, and retighten the black knobs.

SQUEEGEE HEIGHT ADJUSTMENT

In order for the squeegee to pick up effectively, the height must be adjusted to give the correct amount of squeegee rubber contact with the floor. As the machine is moved forward the back squeegee rubber should flare back so that the corner of the leading edge is straight down as shown in the figure labeled "CORRECT"

If the squeegee is too high or too low it will not pick up properly.

To adjust the squeegee height

1. Lower the squeegee to the floor
2. Loosen the jam nut on the squeegee height adjustment screw (located on top of the squeegee bar, directly above the squeegee wheels)
3. To raise squeegee turn screw clockwise, to lower turn counterclockwise.
4. Retighten jam nut.

USE OF THE BATTERY CHARGER

The Kent Battery Charger is electronically controlled and will drop and hold a finish rate of 2 to 3 amps at which time the charger will stay on for another 2 hours before stopping. Timer often will not go to zero or off. The charger is equipped with a standard 15 amp fuse for protection from short circuit or reverse polarity of the batteries.

To operate the battery charger

1. Open the battery compartment lid. Do not close this lid during charging operation.

Hydrogen gas is formed when the batteries approach the full charge state. This gas is explosive; therefore, when charging batteries with lid open, avoid any open flame or electric spark near batteries. This includes connecting or disconnecting



CAUTION:

charger with timer "ON." To avoid accumulation of gas, be sure batteries receive good air circulation while being charged.

2. Connect the charger plug into the machine firmly. The charger plug is mounted in the battery compartment and beneath the control panel.

3. Plug the battery charger into a normal electrical outlet and turn the timer to "ON."

NOTE: Set the battery charger on a flat, hard surface to insure that cooling air can circulate through the bottom louvers.

The battery charger is guaranteed against defective parts and workmanship. Any parts proving defective within six months will be repaired free of charge when the charger is returned prepaid to the manufacturer.

battery has been opened or repaired or manufacturer's identification markings has been obliterated before presentation for adjustment or if battery has broken case or cover or if battery is discharged.

SCALE FOR PRO-RATING AFTER 90 DAYS

Months Operation Price Exchange
Months Guarantee x 1 = Price

All batteries are guaranteed for twelve (12) months from date of receipt.

BATTERY CARE

Battery care determines the life span and efficiency of the units; therefore, for the longest possible useful life from these batteries, the following procedure should be followed:

1. Keep battery solution (electrolyte) level up in cells. Check daily - if cells need water, use only distilled or approved water.

2. Keep batteries fully charged.

3. Keep batteries and connection clean. When necessary, clean with baking soda solution, attach wires and coat terminals with grease to retard corrosion.

SERVICE & BATTERY GUARANTEE APPLYING TO SCRUBBER-VAC BATTERIES

SERVICE GUARANTEE: If a battery becomes unserviceable in normal use within 90 days of purchase, the purchaser is entitled to a new battery of a comparable size and type, without charge, or to the necessary repairs, without charge for either labor or materials, at the option of the manufacturer. Transportation, recharges, or the use of rental batteries are not classed as repairs and the battery owner is expected to pay for such services, if required.

ADJUSTMENT POLICY: If a battery becomes unserviceable in normal use after the expiration of the service guarantee, it will be repaired or replaced with another battery of a comparable size and type to the original purchaser, on a pro-rated price basis, in exchange for the unserviceable battery, the purchaser paying only for the service received, plus transportation charges.

LIMITATIONS: Failure in service due to fire, wreckage, explosion, freezing, abuse or neglect, use of battery "ropes," or the use of a battery of a group size smaller than of the battery used as original equipment is not covered by the Service & Battery Guarantee. The Service & Battery Guarantee will not apply if

SERVICE DIAGNOSIS - TROUBLE SHOOTING CHECKLIST

PROBLEM

CORRECTION

MACHINE WILL NOT MOVE

- 1 Power Switch not on
- 2 Battery condition low
3. Speed set too low

- 1 Turn main switch "ON"
- 2 Check voltmeter and charge batteries
- 3 Adjust speed control knob

BRUSH DRIVE MOTOR WILL NOT START

1. Battery condition low
2. Circuit breaker tripped
3. Pins left in brush plate tripping circuit breaker

- 1 Check voltmeter and charge batteries
- 2 Reset by pushing circuit breaker button
- 3 Remove pins and store in holes in frame

MACHINE STREAKING A CLEANED FLOOR

- 1 Foreign materials lodged under rear squeegee blade
- 2 Insufficient water flow to brushes
3. Worn squeegee blades
- 4 Worn brushes or pads
5. Improper squeegee adjustment

- 1 Raise squeegee and clean squeegee blade
- 2 Clean screen and fresh solution tank and eliminate any restrictions in lines
- 3 Replace squeegee blade
- 4 Replace brushes or pads
- 5 See Squeegee Adjustments

VACUUM SUCTION BLOCKED

- 1 Clogged pick-up tube
- 2 Lint Filter dirty
- 3 Clogging at elbows and hose entering recovery tank
- 4 Clogging at filter bag supports air passages
- 5 Clogging at filter bag

- 1 Remove accumulations
- 2 Clean lint filter
- 3 Remove elbow and clean
- 4 Remove bag from support and clean screen
- 5 Replace with clean bag

SHORT OPERATING TIME

- 1 Battery charge condition very low
- 2 Constant scrub operation in high pressure (strip) position
- 3 Corroded wires or connectors

- 1 Recharge batteries fully before beginning operation
- 2 Use high pressure more sparingly
- 3 Clean thoroughly

CIRCUIT BREAKER KEEPS TRIPPING

- 1 Pins left in brush plate
- 2 Pads or brushes rubbing

- 1 Remove pins and store in holes in frame
- 2 Install original equipment accessories

WATER WILL NOT COME ON

- 1 Pump not on
- 2 One of the filters has become clogged
- 3 Screened strainer has become clogged
- 4 Kink in water line
- 5 Fitting at soap injection has become clogged

- 1 Check for loose wires
- 2 Clean or replace filter(s)
- 3 Remove from machine and clean with running water
- 4 Straighten line
- 5 Clean by removing hose on the pump side of the "T" and check passage

SQUEEGEE LEVER DOES NOT PICK UP

- 1 Squeegee height requires adjustment

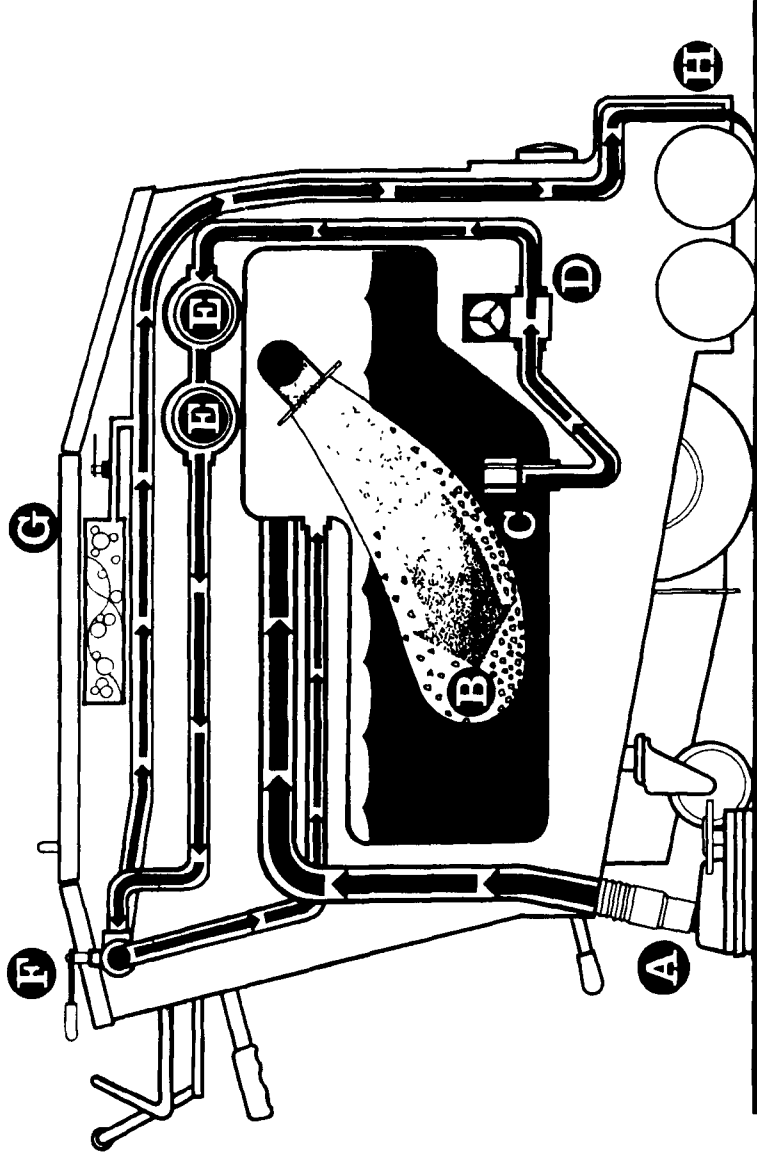
- 1 See adjustment instructions in catalog

CHARGER WILL NOT COME ON

- 1 DC or AC cords not connected
- 2 Fuse defective
- 3 Polarity reversed

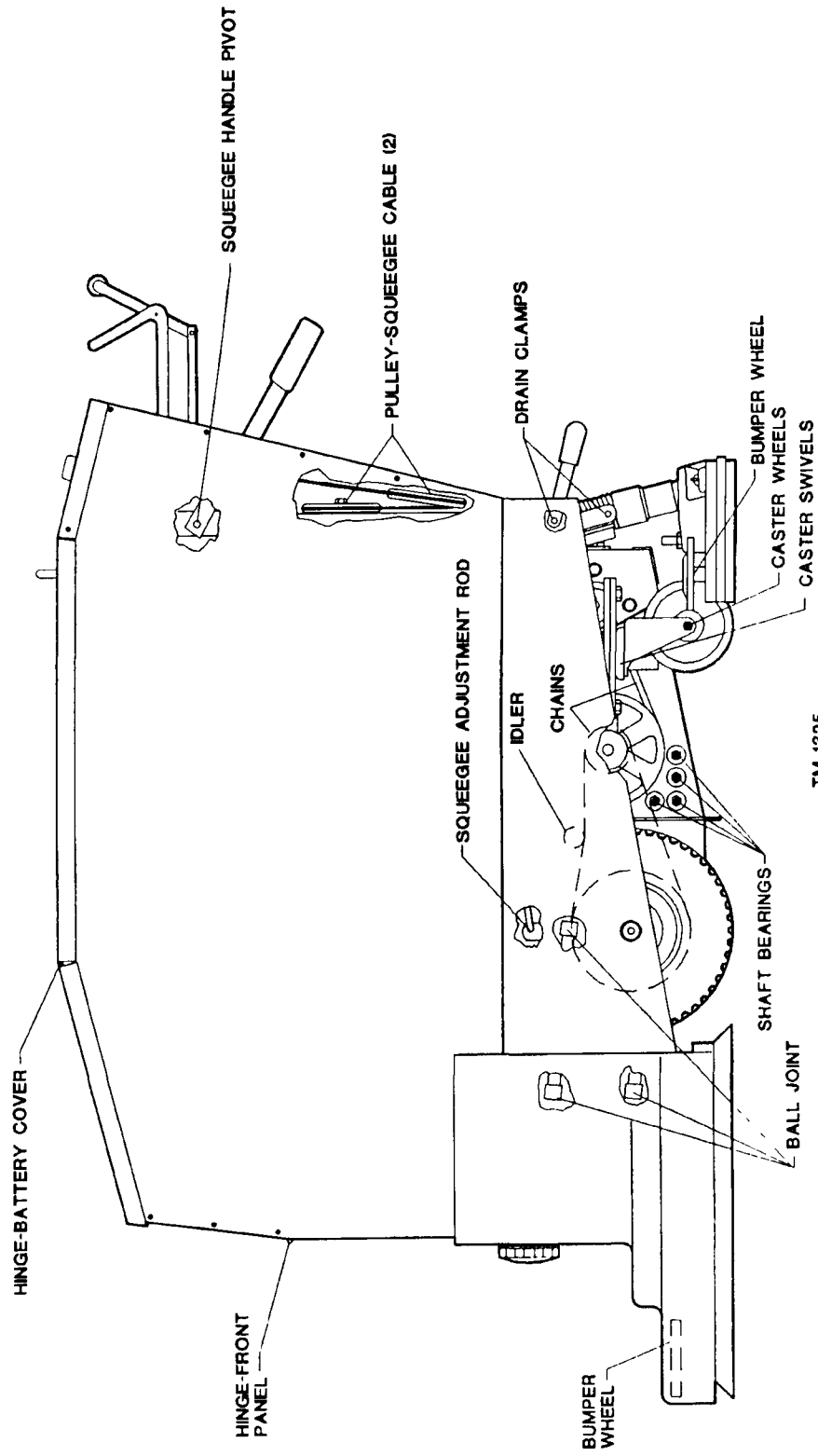
- 1 Connect
- 2 Replace fuse with standard 15 Amp fuse
- 3 Change polarity so voltmeter on instrument panel reads correctly

HOW THE KENT RECYCLE SYSTEM WORKS....



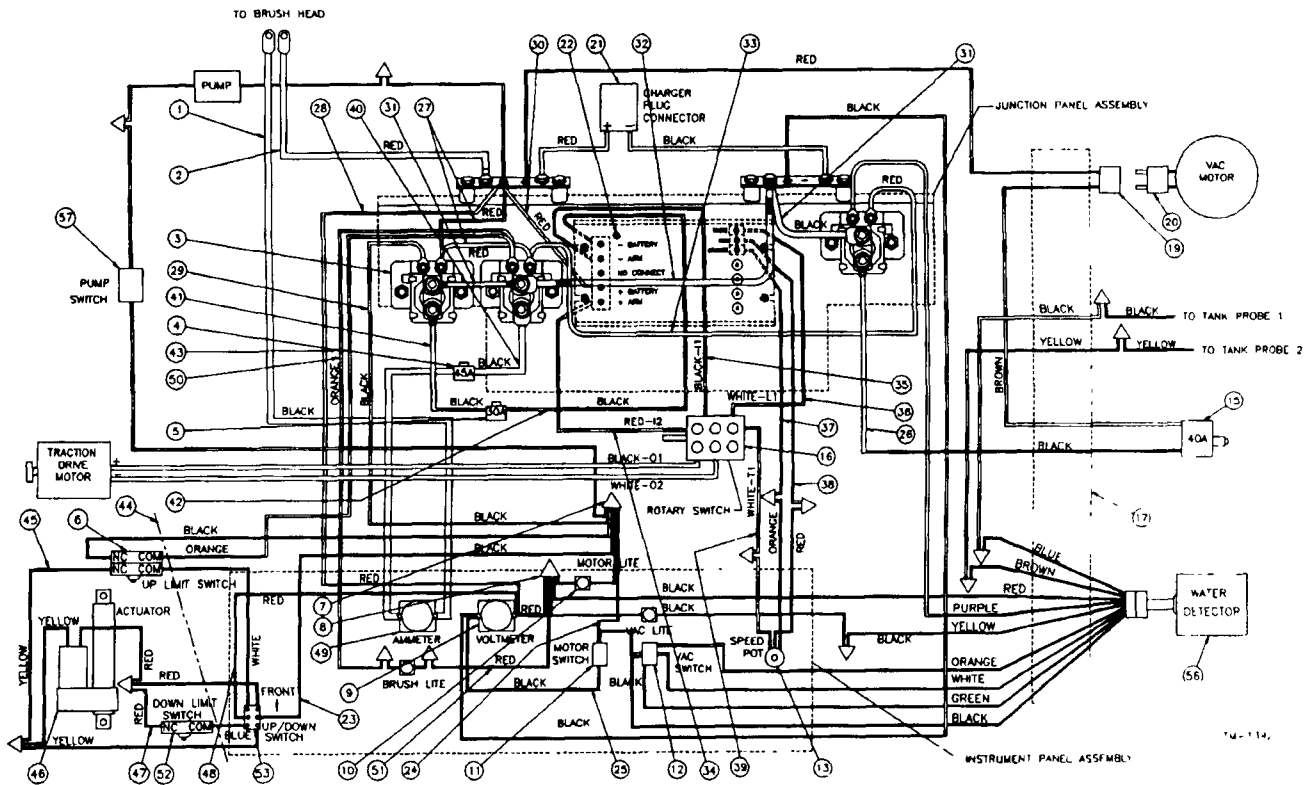
(A) As the operator is scrubbing the floor, dirty solution is recovered by a powerful 3/4 HP vacuum and Kent's patented swinger squeegee. (B) The dirty solution, upon entering the 25 gallon solution/recovery tank passes through a sock-type filter capable of removing debris as small as 25 microns. Once in the tank the solution is ready to begin the journey back through the system by being pulled through a raised mesh tank filter (C) by a 1.8 gpm/100 psi pump (D). The solution is then pushed downstream through a series of two chamber cartridge filters (E) capable of removing gritty particulate matter as small as 5 microns. The now clean solution enters a valve control housing (F) that allows the operator manual control over the solution flow ratio. The valve can also be shut completely which would route the solution back to the tank. In this mode an operator can literally self-clean the solution and tank, by continuously passing the solution through the filter system. However, in normal scrubbing operation, the solution is allowed to pass downstream to the floor surface at a choice of varied flow rates. Before the solution reaches the floor, chemical is dispensed into the flow from an independent 1.75 gallon tank (G). The amount of chemical is regulated by a precision brush shower feed (H) to begin the entire cleaning cycle over again.

LUBRICATION CHART KA-38ERB



TM-1325

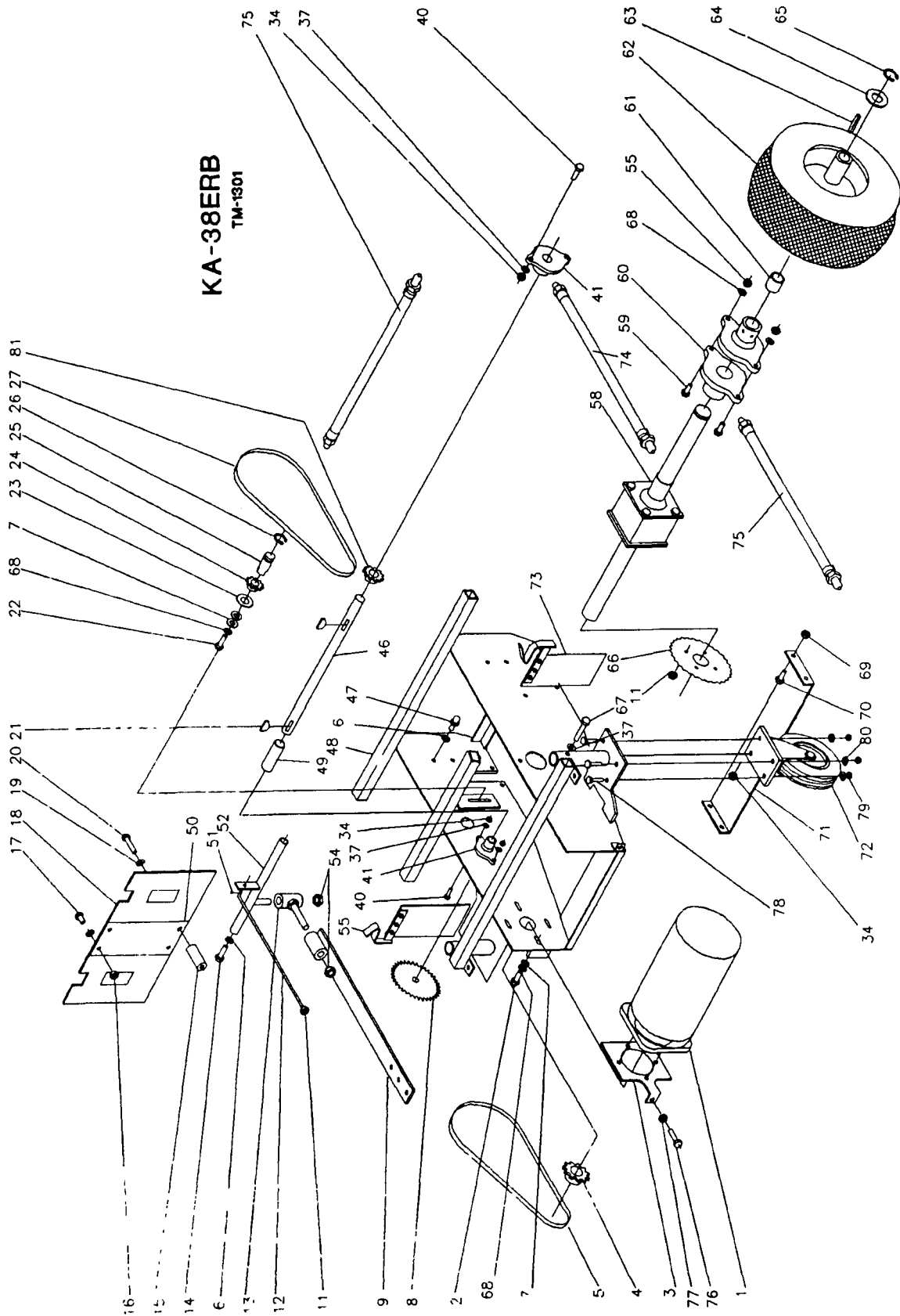
KA-38ERB WIRING DIAGRAM



| DET PART NO. | DESCRIPTION | QUANT |
|--------------|--------------------------------------|-------|
| 1 | 025340 ASM,WIRE—6GA,BLK,78 0L,RINGS | 1 |
| 2 | 025341 ASM,WIRE—6GA,RED,78 0L,RINGS | 1 |
| 3 | 026504 SOLENOID—SWITCH,SPNO,36VDC | 3 |
| 4 | 026924 CIRCUIT BREAKER—45 AMP | 1 |
| 5 | 026651 CIRCUIT BREAKER—30 AMP,THRM | 1 |
| 6 | 026979 SWITCH,PUSH—DPDT,20A | 1 |
| 7 | 026400 NUT,WIRE—IDEAL 74B | 2 |
| 8 | 026464 NUT,WIRE-IDEAL 73B | 7 |
| 9 | 026503 VOLTMETER | 1 |
| 10 | 026507 LIGHT,INDICATOR—RED,36VDC | 3 |
| 11 | 026469 SWITCH,RKR—SPST,10A,250V,3/4H | 1 |
| 12 | 026466 SWITCH,RKR—SPST,10A,250V,3/4H | 1 |
| 13 | 025954 POTENTIOMETER | 1 |
| 14 | 027056 DIODE—IN4006,SVC FOR 026984 | 1 |
| 15 | 026750 CIRCUIT BREAKER—40 AMP,THRM | 1 |
| 16 | 027057 SWITCH,CAM 40 AMP MOTOR REV | 1 |
| 17 | 027104 ASM,WIRE—11CNT | 1 |
| 18 | 026947 SWITCH,TILT—MERCURY | 1 |
| 19 | 026661 CONN,RCPT—2-WR,LINE CONN,FEM | 1 |
| 20 | 026555 CONN,PLUG—2-WR,LINE CONN,MALE | 1 |
| 21 | 026573 CHARGER PLUG | 1 |
| 22 | 025953 CONTROL—VOLTAGE DC | 1 |
| 23 | 025554 ASM,WIRE—16GA,BLK,10 5L,COMB | 1 |
| 24 | 027042 ASM,WIRE—2 CNDCT,16GA,BLK | 1 |
| 25 | 025244 ASM,WIRE—2 CNDCT,16GA,BLK | 1 |
| 26 | 025765 ASM,WIRE—14GA,BLK,12 00L,COMB | 1 |
| 27 | 025246 ASM,WIRE—16GA,RED, 6 0L,RINGS | 2 |
| 28 | 025258 ASM,WIRE—2 CNDCT,16GA,RED | 1 |
| 29 | 027064 ASM,WIRE—16GA,BLK,24 00L,RING | 1 |

| DET PART NO. | DESCRIPTION | QUANT |
|--------------|---------------------------------------|-------|
| 30 | 027072 ASM,WIRE—12GA,RED,8 00L,RING | 1 |
| 31 | 027061 ASM,WIRE—12GA,BLK,7 00L,RING | 2 |
| 32 | 025274 ASM,WIRE—6GA,BLK,14 0L,RINGS | 1 |
| 33 | 027075 ASM,WIRE—16GA,RED,16 00L,RING | 1 |
| 34 | 027070 ASM,WIRE—12GA,RED,24 00L,RING | 1 |
| 35 | 027068 ASM,WIRE—BLK,24 00L,RINGS | 1 |
| 36 | 027074 ASM,WIRE—16GA,WHI,16 00L,RING | 1 |
| 37 | 025827 WIRE—RS 98042,12 00L, 38& 38 | 1 |
| 38 | 027073 WIRE—RS 098036,12 00L, 38, 38 | 1 |
| 39 | 027096 ASM,WIRE—16 GA WHT,12 00L,RING | 1 |
| 40 | 025303 ASM,WIRE—6GA,BLK,10 0L,RINGS | 1 |
| 41 | 027060 ASM,WIRE—12GA,12 00L,RINS | 1 |
| 42 | 027066 ASM,WIRE—GA BLK,12 00L RING | 1 |
| 43 | 027062 ASM,WIRE—16GA,ORN,12 00L,RING | 1 |
| 44 | 025823 ASM,WIRE—6 CNDCT,16GA,COMB | 1 |
| 45 | 025825 ASM,WIRE—16GA,YEL,18 0L,RING | 1 |
| 46 | 024368 ACTUATOR,DC—36V,500LBS,6IN | 1 |
| 47 | 025824 ASM,WIRE—16GA,RED, 6 0L,RING | 1 |
| 48 | 025648 ASM,WIRE—16GA,RED, 9 0L,COMB | 1 |
| 49 | 026980 AMMETER—DC,0-50A,COLOR CODED | 1 |
| 50 | 025826 ASM,WIRE—16GA,ORN,12 0L,RING | 1 |
| 51 | 025410 WIRE—RS 98036,12 00L, 62& 62 | 1 |
| 52 | 026515 SWITCH,PUSH—SPDT,21A,240V | 1 |
| 53 | 026981 SWITCH,RKR—DPDT,20A,MOMENTARY | 1 |
| 54 | 027043 ASM,WIRE—16 GA,RED,54"L,RING | 1 |
| 55 | 027045 ASM,WIRE—16 GA,BLK,60"L,SPD | 1 |
| 56 | 034924 ASM,CIRCUIT—FOAM DETECTOR BOX | 1 |
| 57 | 026973 SWITCH,TOGGLE—SPST,10A,250VAC | 1 |

KA-38ERB
TM-1301

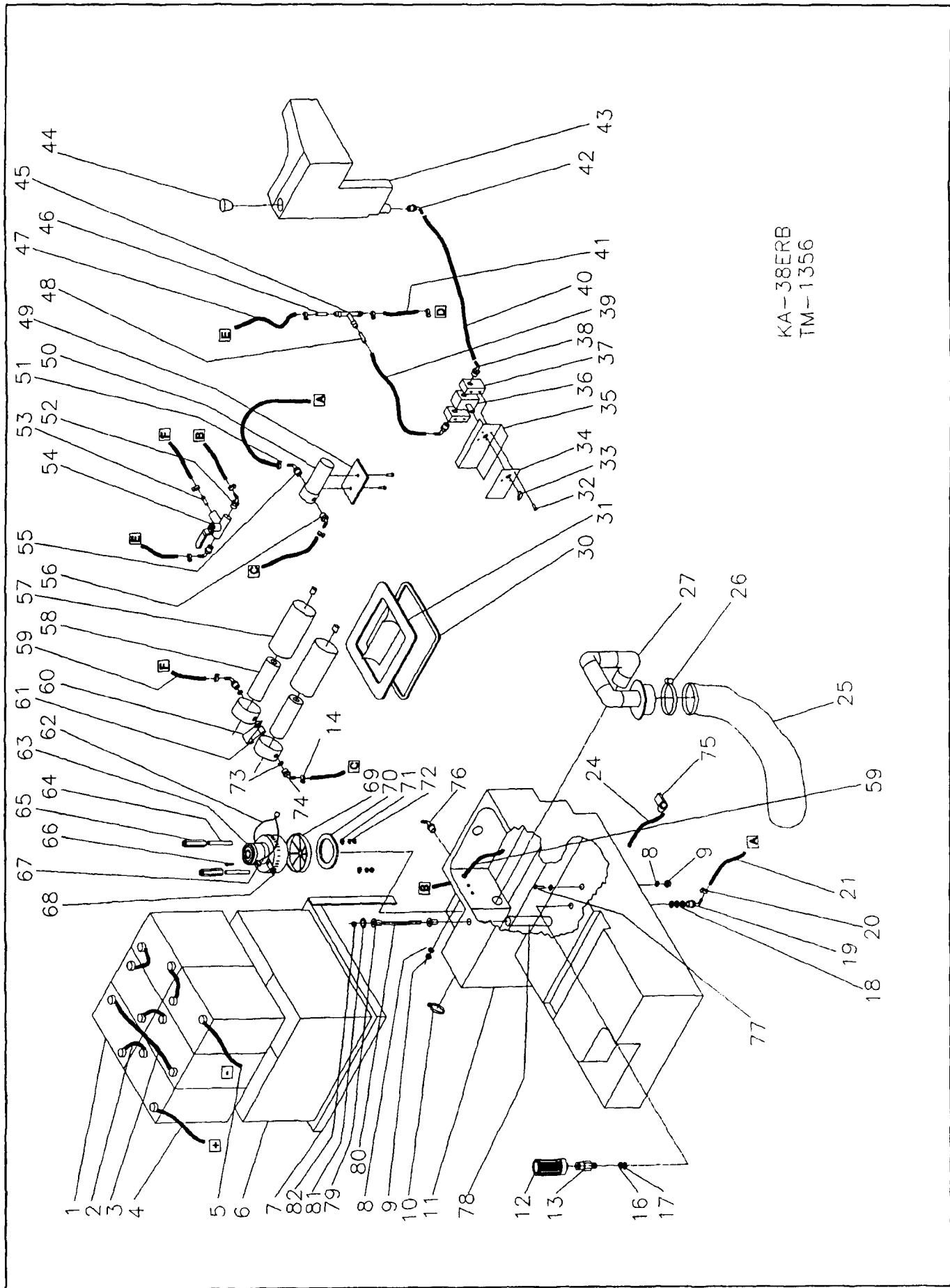


• ENTIRE ASSEMBLY IS PART NO 039405

KA-38ERB LOWER CHASSIS

| DET PART NO. | DESCRIPTION | QUANT |
|--------------|--------------------------------|-------|
| 41 | BRG,W/PB—625ID,MALLEABLE IRN | 2 |
| 46 | SHAFT—AUTO SCRUBBER | 1 |
| 47 | BALL JOINT | 4 |
| 48 | WDMT,CHASSIS—LOWER | 1 |
| 49 | TUBE,STL—750OD,17GA,1.825L | 1 |
| 50 | PLATE,MTG—SPLASH GUARD 4.0X7 | 1 |
| 51 | PIN,COTTER—094X 750 LONG | 1 |
| 52 | WDMT,SQUEEGEE—ADJUSTMENT | 1 |
| 54 | NUT,HEX LOCK—500-13,ZN PLT | 2 |
| 55 | ASM,GUARD—SPLASH, LEFT | 1 |
| 58 | DIFFERENTIAL,DRIVE—26&32 AUTO | 1 |
| 59 | SCR CAP HEX HD 312-18X1 75L | 4 |
| 60 | BRG,BALL,ANLR,SLD—SELF ALGN | 4 |
| 61 | SPACER,STL—1.01X1.25, 563L | 2 |
| 62 | WHEEL—RS 51395 FOAM FILLED | 2 |
| 63 | KEY,SQUARE—250 SQ,2 500 LONG | 2 |
| 64 | WSHR FLT 1 05ID1 500D 036T STL | 4 |
| 65 | RING,RTNG—EXT, 984 SHAFT,5160 | 2 |
| 66 | SPROCKET,CHAIN—#40,500P,44T | 1 |
| 67 | SCR CAP HEX HD 250-20X1 75L | 2 |
| 68 | WSHR LK 326ID 586OD 078TSPLT | 11 |
| 69 | NUT,HEX LOCK—375-16,NYLOC | 4 |
| 70 | SCR CAP HEX HD 375-16X 750L | 4 |
| 71 | SUPPORT,PLATE—LOWER 26&32AUTO | 2 |
| 72 | CASTER,SWIVEL—5 0 DIA,MACH'D | 2 |
| 73 | ASM,GUARD—SPLASH, RIGHT | 1 |
| 74 | ASM,HOSE—GREASE, 8 50L HOSE | 2 |
| 75 | ASM,HOSE—GREASE, 10 25L HOSE | 5 |
| 76 | SCR CAP HEX HD 312-18X1 25L | 1 |
| 77 | NUT,HEX JAM—312-18,ZN PLT | 1 |
| 78 | SCR CAP HEX HD 375-16X1 00L | 8 |
| 79 | NUT,HEX—375-16,ZN PLT | 8 |
| 80 | WSHR LK 398ID 694OD 040T EXT | 8 |
| 81 | SPROCKET,CHAIN—#40, 500P,11T | 1 |

| DET PART NO. | DESCRIPTION | QUANT |
|--------------|-------------------------------|-------|
| 1 | PLATE,MTR BRUSH—FOR 23308 EAG | 2 |
| 1 | MTR,DC—36V, 750HP, 700RPM,48F | 1 |
| 1 | BRUSH,MTR—FOR 023308,EAGLE | 2 |
| 1 | SPRING,MTR BRUSH—FOR 23308 EA | 2 |
| 1 | BRG,BALL—669ID,1 575OD, 472W | 2 |
| 2 | SCR CAP HEX HD 312-18X1 00L | 4 |
| 3 | BRACKET,STL—6 0X5 0,TENSIONER | 1 |
| 4 | SPROCKET,CHAIN—#35, 375P,11T | 1 |
| 5 | CHAIN ROLLER—#35,32 5LK&CONN | 1 |
| 6 | WSHR LK 390ID 683OD 094TSPLT | 6 |
| 7 | WSHR FLT 344ID 750OD 060T STL | 6 |
| 8 | SPROCKET,CHAIN—#35, 375P,36T | 1 |
| 9 | ASM,SQUEEGEE BAR—W/WHEELS | 1 |
| 9 | WDMT,SQUEEGEE BAR—PIVOT TUBE | 1 |
| 11 | NUT,HEX LOCK—312-18,ZN PLT | 1 |
| 12 | ROD,SQUEEGEE—312 DIA X 13 3L | 1 |
| 13 | WDMT,PIVOT—SQUEEGEE | 1 |
| 14 | SCR CAP HEX HD 375-16X.875L | 2 |
| 15 | SPACER,PHEN—250X.500, 375L | 2 |
| 16 | NUT,HEX LOCK—10-24,NYLOC | 2 |
| 17 | SCR MACH RD HD 10-24X 500L | 2 |
| 18 | RUBBER,SPLSH GUARD—8 18X14,75 | 1 |
| 19 | WSHR FLT 187ID1 000D 063T STL | 4 |
| 20 | SCR TPG F PAN HD 10-24X 875L | 2 |
| 21 | KEY,WOODRUFF—#606,750D, 187W | 2 |
| 22 | ASM,GREASE FITTING 'AUTOS' | 1 |
| 23 | WSHR FLT 344ID1 000D 036T STL | 1 |
| 24 | SPROCKET,CHAIN—#40 500P,11T | 1 |
| 25 | IDLER SHAFT—MOTOR 1 339 LONG | 1 |
| 26 | RING,RTNG—EXT, 625 SHAFT,5100 | 1 |
| 27 | CHAIN,ROLLER—#40, 68LK & CONN | 1 |
| 28 | LINK,CONN—#40 ROLLER CHAIN | 1 |
| 34 | NUT,HEX—250-20,ZN PLT | 6 |
| 37 | WSHR LK 262ID 489OD 062TSPLT | 6 |
| 40 | SCR CAP HEX HD 250-20X1 00L | 4 |



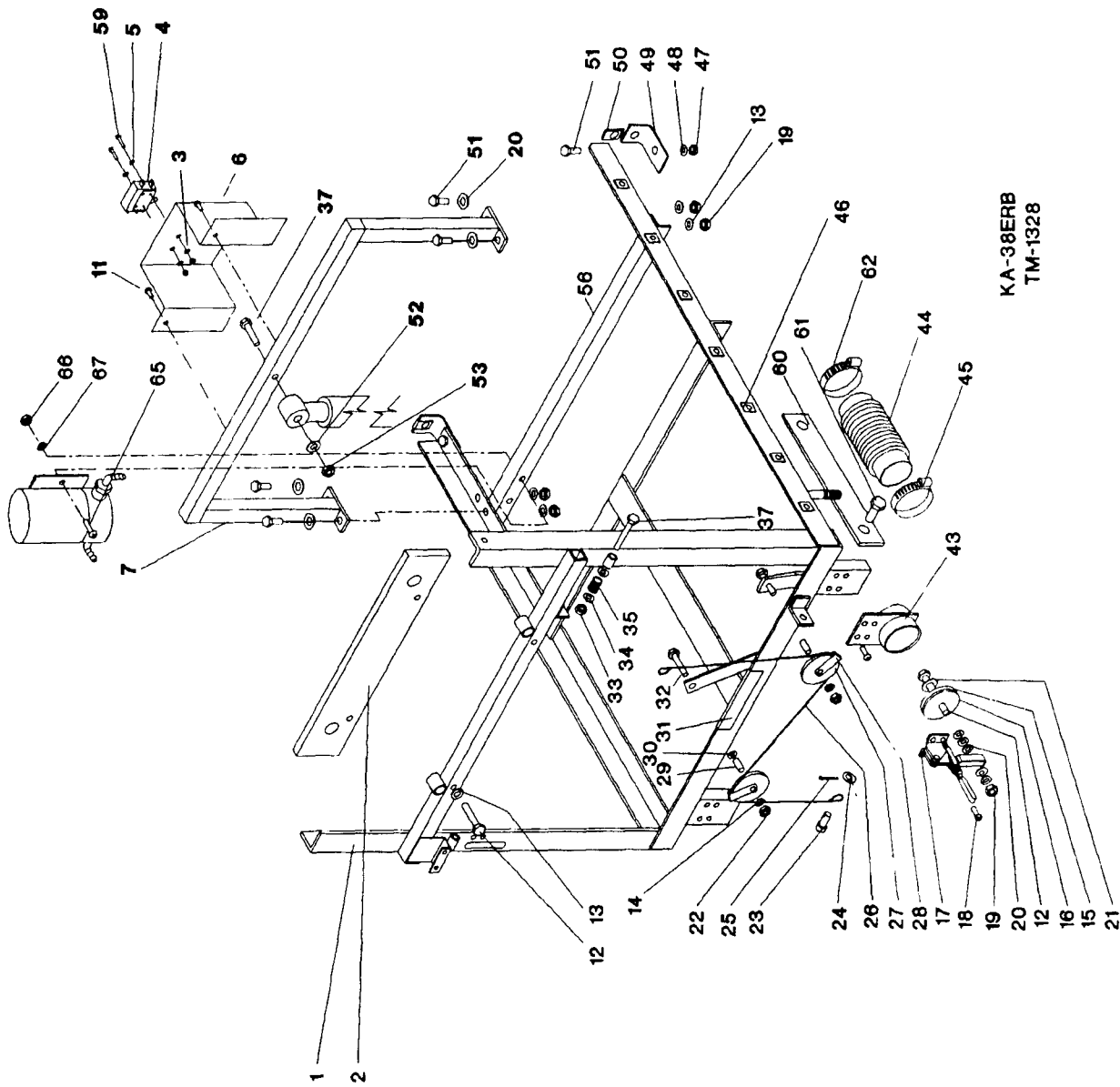
KA-38ERB
TM-1356

TANK ASSEMBLY KA-38ERB

| DET PART NO. | DESCRIPTION | QUANT |
|--------------|--------------------------------|-------|
| 43 | SOAP TANK—MACHINED,KA-32RB | 1 |
| 44 | RUBBER, PLUG—MACHINED | 1 |
| 45 | TEE,HOSE—3/8HS X 3/8HSX,1/4H | 1 |
| 46 | NOZZLE,3/8 DIA X 1 265L, BRASS | 1 |
| 47 | TUBE,VINYL—375X 625X64L,R | 2 |
| 48 | NOZZLE,.250 X 1.00L, BRASS | 1 |
| 49 | BRACE PLATE—PUMP,KA-32RB | 1 |
| 50 | PUMP,WATER—100PSI,DIAPH,36VDC | 1 |
| 51 | CHAMBER,FILTER—10"L,3/4IPT,PL | 2 |
| 52 | ELBOW,PP-HS—1/2MPT X 3/8HS,NY | 2 |
| 53 | ADPTR,PP-HS—1/2MPT X 3/8HS,N | 1 |
| 54 | VALVE,3-WAY—50IPT, BRASS | 1 |
| 55 | ELBOW PIPE—3/8PP X 1/2HS,NY | 1 |
| 56 | ELBOW,HSPP—3/8MPT X 3/8HS,NY | 1 |
| 57 | CHAMBER,FILTER—10"L,3/4IPT,PL | 2 |
| 58 | FILTER,COTTON—5 MICRON | 2 |
| 59 | TUBE,VINYL—375X 625X94L,R | 2 |
| 60 | BRKT,FILTER ASM—KA-32RB | 1 |
| 61 | NIPPLE,HEX—.750X.750, BRASS | 1 |
| 62 | CONN,PLUG—2-WR,LINE CONN,MALE | 1 |
| 63 | MTR,VAC—36V,BYP,3STAGE | 1 |
| 64 | STUD—10-24X6 25L | 2 |
| 65 | BAR,ALUM,HEX—.500, 3 00 LONG | 2 |
| 66 | SCR TPG F PAN HD 10-B X 625L | 2 |
| 67 | BRUSH,MTR—FOR 024373 VAC MTR | 2 |
| 68 | LUG MOTOR MOUNT | 2 |
| 69 | LINT FILTER | 1 |
| 70 | GASKET-VAC MOTOR | 1 |
| 71 | SPACER,RBR—130X1 00, 187L | 2 |
| 72 | WSHR FLT 234ID1 125OD 036T STL | 2 |
| 73 | BSHG,THRDD,BRS—MACHINED | 2 |
| 74 | ELBOW,HSPP—3/8MPT X 3/8HS,NY | 2 |
| 75 | CLAMP,LOOP—609 CLOSED I D | 1 |
| 76 | ELBOW,PP-HS—1/4 MPTX3/8HS,PLS | 1 |
| 77 | SCR MACH PAN HD 10-24X 875L,SS | 2 |
| 78 | TUBE,PLSTC—RS098556,4 000L | 1 |
| 79 | NUT,WELL—250-20 | 2 |
| 80 | ROD,SENSOR—6 50L | 1 |
| 81 | WSHR FLT 281ID1 250D 063T STL | 1 |
| 82 | NUT,HEX LOCK—250-20,NYLOC,ZN | 1 |

| DET PART NO. | DESCRIPTION | QUANT |
|--------------|-------------------------------|-------|
| 1 | BATTERY—6VOLT,350AH,WET | 6 |
| 2 | ASM WIRE—6GA,BLK,8 0L,RINGS | 4 |
| 3 | ASM,WIRE—6GA,BLK,24"L,RINGS | 1 |
| 4 | ASM,WIRE—6GA,RED, 8 0L,RINGS | 1 |
| 5 | ASM,WIRE—6GA,BLK,10 2L,RINGS | 1 |
| 6 | BOX,BATT—AUTO RECYCLE,MACH'D | 1 |
| 7 | WDMT,BATTERY FRAME—KA-26RB | 1 |
| 8 | WSHR SEAL 203ID SS | 4 |
| 9 | NUT,HEX—10-24,ZN PLT | 5 |
| 10 | CLAMP,HOSE—2.25 MAX DIA,WORM | 1 |
| 11 | TANK—MACHINED,RECYCLE | 1 |
| 12 | STRAINER,PUMP—RECYCLE,AUTO | 1 |
| 13 | BRASS FITTING—WATER VALVE,1.0 | 1 |
| 14 | CLAMP,HOSE—875 MAX DIA,WORM | 7 |
| 16 | WSHR FLT 1.08ID2.06OD W/FLAT | 2 |
| 17 | GASKET,NEOPRENE—2.00D X.88ID | 2 |
| 18 | NUT,HEX LOCK—.750 IPT,CONDUIT | 1 |
| 19 | ELBOW,PIPE—3/4 IPT X 1/2HS,NY | 1 |
| 20 | CLAMP,HOSE—875 MAX DIA,WORM | 2 |
| 21 | TUBE,VINYL—500X.750,13.00L | 1 |
| 24 | TUBE,VINYL—375 X.500 X13.00L | 1 |
| 25 | FILTER,BAG TYPE | 1 |
| 26 | CLAMP,ADJ—21 50"L | 1 |
| 27 | ASM,SOCK HOLDER & PIPES | 1 |
| 28 | SCR MACH PAN HD 10-24X.750L | 1 |
| 29 | CLAMP,LOOP—297 CLOSED I D. | 2 |
| 30 | GASKET,LID—KA-32RB | 1 |
| 31 | ASM,LID & GASKET—KA-32RB | 1 |
| 32 | SCR MACH PAN HD 10-32X 625L | 4 |
| 33 | POINTER,BLK—221 BUSHING,SET | 1 |
| 34 | LABEL—SOAP PANEL | 1 |
| 35 | PANEL,SOAP VALVE—KA-32RB | 1 |
| 36 | VALVE,NEEDLE—25IPT,BR,MACH | 1 |
| 37 | BRACKET,SOAP VALVE—KA-32RB | 2 |
| 38 | ELBOW,PP-HS—1/8,MPT X 1/4HS,N | 2 |
| 39 | TUBE,VINYL—25IDX.38ODX40"LC | 1 |
| 40 | TUBE,VINYL—1/4X3/8X20"L,CLEP | 1 |
| 41 | TUBE,VINYL—375X 625X18L,R | 1 |
| 42 | ELBOW,PP-HS—1/4MPT X 1/4HS,N | 1 |

Add:
 12) 056235 Strain
 for Small hole
 13) R01054
 Small hole fitting

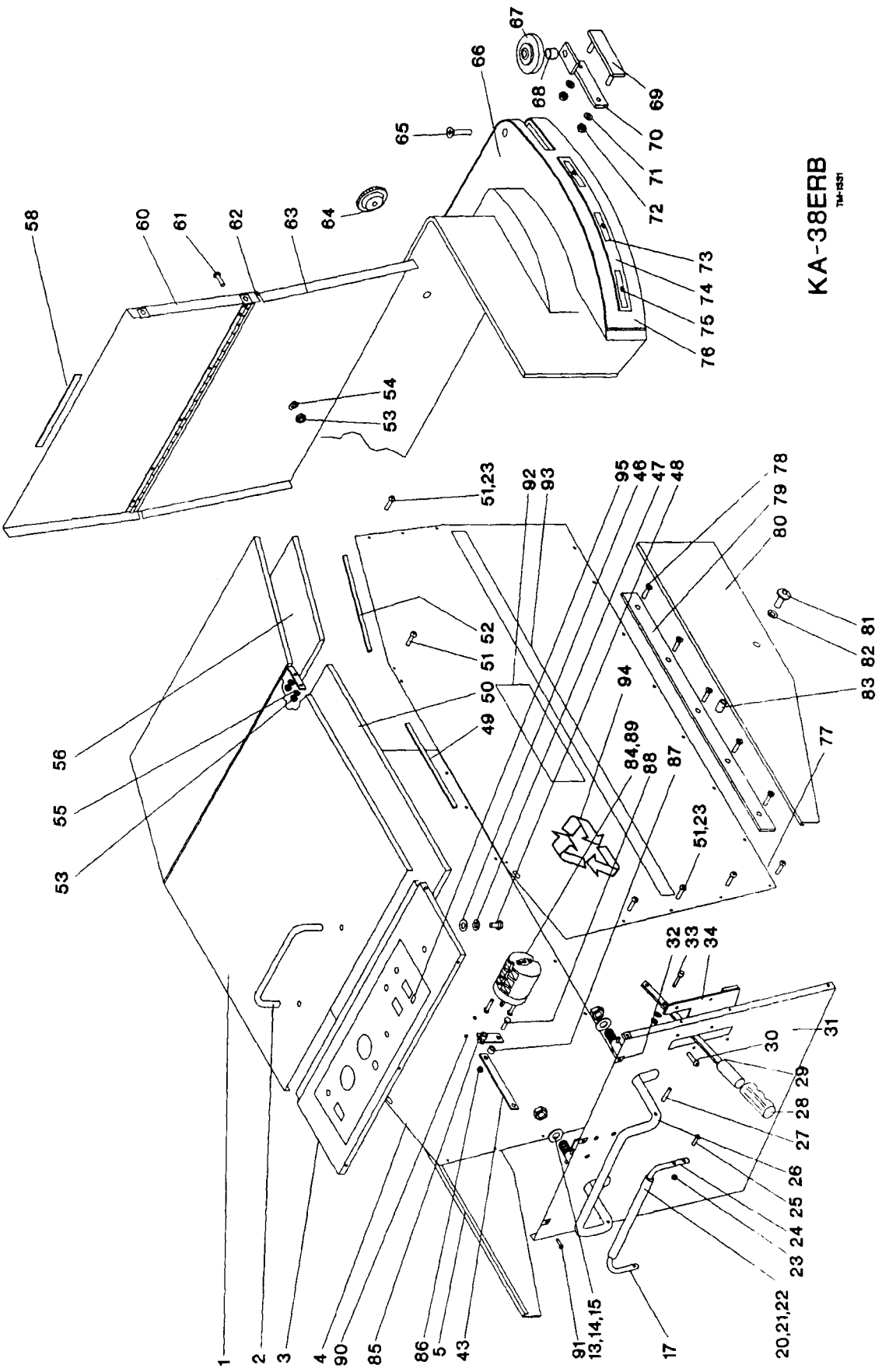


KA-38ERB
TM-1328

UPPER CHASSIS KA-38ERB

| DET PART NO. | DESCRIPTION | QUANT |
|--------------|---------------------------------------|-------|
| 29 | 048177 SPACER,STL—.253X.374, .530L,Z | 3 |
| 30 | 005433 WSHR FLT .281ID.750OD.120T STL | 1 |
| 31 | 048178 WEAR STRIP-CABLE 98256 | 1 |
| 32 | 002269 SCR CAP HEX HD .250-20X1.25L | 3 |
| 33 | 003368 NUT,HEX LOCK—.375-16,ZN PLT | 2 |
| 34 | 005483 WSHR FLT .438ID1.000D.104T STL | 4 |
| 35 | 048206 SPRING,COMP .600D 1.00L .072WD | 2 |
| 37 | 003268 SCR CAP HEX HD .375-16X3.00L | 2 |
| 43 | 032489 WDMT,BRACKET—DUMP VALVE | 1 |
| 44 | 048783 HOSE,RBR,FLEX—4.37-7 50L | 1 |
| 45 | 049999 CLAMP,HOSE—2.25 MAX DIA,WORM | 1 |
| 46 | 005591 NUT,SELF RETAINING—250-20 | 14 |
| 47 | 003293 NUT,HEX—375-16,ZN PLT | 2 |
| 48 | 004214 WSHR LK 390ID 683OD 094TSPLT | 2 |
| 49 | 051391 BRACKET,ANGLE—FRONT PANEL | 2 |
| 50 | 003436 NUT,SPEED,J—250-20, 63X 96,Z | 2 |
| 51 | 003249 SCR CAP HEX HD .312-18X1.25L | 4 |
| 52 | 004384 WSHR FLT .406ID.875OD.064T STL | 1 |
| 53 | 005279 NUT,HEX LOCK—.375-16,NYLOC | 2 |
| 56 | 055461 ANGLE,STL—1.50X1.50X24L.32RB | 1 |
| 59 | 001248 SCR MACH RD HD 6-32X1.00L | 2 |
| 60 | 050025 BAR-CASTER SUPPORT 26&32 AUTO | 2 |
| 61 | 005423 SCR CAP HEX HD 250-20X2 00L | 2 |
| 62 | 044112 CLAMP,HOSE—2 50 MAX DIA,WORM | 1 |
| 65 | 001260 SCR MACH RD HD 8-32X 625L | 2 |
| 66 | 003276 NUT,HEX— 8-32,ZN PLT | 2 |
| 67 | 004252 WSHR LK 176ID 381OD 023T EXT | 2 |

| DET PART NO. | DESCRIPTION | QUANT |
|--------------|---------------------------------------|-------|
| 1 | 034030 WDMT,CHASSIS—UPPER.32 AUTO | 1 |
| 2 | 032580 ASM,BATTERY—SUPPORT | 1 |
| 3 | 003274 NUT,HEX— 6-32,ZN PLT | 2 |
| 4 | 026979 SWITCH,PUSH—DPDT,20A | 1 |
| 5 | 004200 WSHR FLT .156ID.375OD.065T BRS | 2 |
| 6 | 054684 BRACKET,SWITCH—2.00X2.87,16GA | 1 |
| 7 | 032742 WDMT,SUPPORT—ACTUATOR, | 1 |
| 8 | 005316 SCR TPG F PAN HD 10-24X.375L | 2 |
| 10 | 046648 SPRING,COMP .344D .687L .032WD | 1 |
| 11 | 005316 SCR TPG F PAN HD 10-24X.375L | 3 |
| 12 | 005462 SCR CAP HEX HD 312-18X1.75L | 4 |
| 13 | 004212 WSHR LK .326ID.586OD.078TSPLT | 8 |
| 14 | 002278 WSHR LK .262ID.489OD.062TSPLT | 3 |
| 15 | 048140 WSHR NEOPRENE 250X2.25X 187T | 1 |
| 16 | 048097 WSHR FLT .328ID2 27OD.120T STL | 1 |
| 17 | 048047 DRAIN CLAMP | 1 |
| 18 | 002343 SCR TPG F PAN HD .250-20X.500L | 4 |
| 19 | 003349 NUT,HEX—312-18,ZN PLT | 4 |
| 20 | 005284 WSHR FLT .344ID.687OD 080T STL | 7 |
| 21 | 004374 WSHR FLT .406ID1.75OD.060T STL | 1 |
| 22 | 003283 NUT,HEX—250-20,ZN PLT | 3 |
| 23 | 004383 PIN,CLEVIS—.375X .625 LONG | 1 |
| 24 | 005320 WSHR FLT 406ID 750OD.060T STL | 1 |
| 25 | 004298 PIN,COTTER— 125X .750 LONG | 1 |
| 26 | 048771 CABLE,STL— 125DIA,37 50L | 1 |
| 27 | 048174 PULLEY,CABLE—2 50OD, 378 BORE | 2 |
| 28 | 048176 GUARD-PULLEY | 3 |



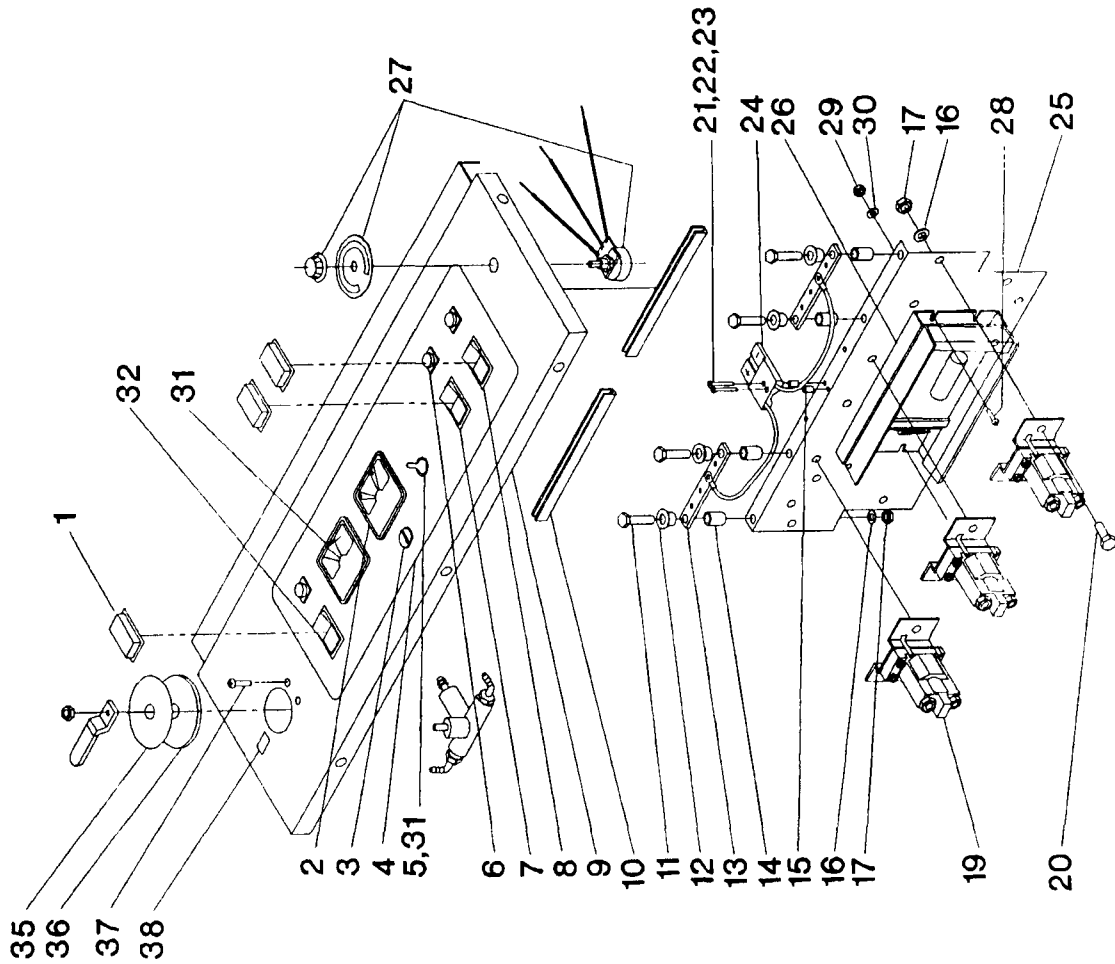
KA-38ERB
TM-1051

OUTER COVER ASSEMBLY KA-38ERB

| DET PART NO. | DESCRIPTION | QUANT |
|--------------|--------------------------------|-------|
| 1 | ASM,COVER-- | 1 |
| 2 | HANDLE,STL | 1 |
| 3 | PANEL,INSTR--28,RCY,EL,ESC | 1 |
| 4 | PANEL,SIDE--38 AUTO,LEFT | 1 |
| 5 | PANEL,LOWER--LEFT,AUTOMATIC | 1 |
| 13 | NUT,HEX JAM--625-11,ZN PLT | 2 |
| 14 | WSHR FLT .625ID1 25OD.120T STL | 2 |
| 15 | PIN,ROLL--187 DIA,1.000L | 2 |
| 16 | SWITCH,PUSH--SPDT,20A,125-250V | 2 |
| 17 | BAR,HANDLE-LEFT,26&32 AUTO | 1 |
| 20 | ASM,SQUEEZE HANDLE--26&32 AUTO | 1 |
| 21 | HANDLE-TRACTION BAR | 1 |
| 22 | PIN,ROLL--187 DIA, .880L | 1 |
| 23 | NUT,HEX LOCK-- 10-24,NYLOC | 15 |
| 24 | BAR,HANDLE-RIGHT,26&32 AUTO | 1 |
| 25 | SCR MACH PAN HD 10-24X1.00L | 1 |
| 26 | WDMT,SQUEEZE BAR | 1 |
| 27 | PIN,ROLL--187 DIA,1.375L | 2 |
| 28 | HANDLE-GRIP | 2 |
| 29 | ASM,HANDLE--SQUEEGEE | 1 |
| 30 | SCR MACH RD HD .250-20X.500L | 4 |
| 31 | PANEL,BACK--32 AUTO,W/ELEC LFT | 1 |
| 32 | NUT,SPEED,J--250-20, 63X.96,Z | 5 |
| 33 | PIN,CLEVIS--.375X1 000 LONG | 1 |
| 34 | ASM,LOCK--SQUEEGEE | 1 |
| 43 | BAR,STL--188X 50X8 125L | 1 |
| 46 | WSHR FLT 281ID.562OD 063T STL | 2 |
| 47 | WSHR LK 262ID 489OD 062TSPLT | 2 |
| 48 | SCR CAP HEX HD .250-20X 625L | 2 |
| 49 | WEAR STRIP-SIDE PANEL REAR | 2 |
| 50 | COVER-BATTERIES | 1 |
| 51 | SCR MACH PAN HD 10-24X 500L | 20 |
| 52 | WEAR STRIP-SIDE PANEL FRONT | 2 |
| 53 | NUT,HEX-- 10-24,ZN PLT | 14 |
| 54 | WSHR LK 200ID 334OD 047TSPLT | 10 |
| 55 | WSHR LK 204ID 410OD 025T EXT | 4 |
| 56 | SOUND RETAINER - VAC FAN | 1 |
| 58 | WEAR STRIP-UPPER FRONT PANEL | 1 |

| DET PART NO. | DESCRIPTION | QUANT |
|--------------|--------------------------------|-------|
| 60 | PANEL,UPPER FRONT--S STEEL.321 | 1 |
| 61 | SCR TPG F PAN HD 10-24X 375L | 10 |
| 62 | HINGE,BUTT--1.25X24 50 LONG | 1 |
| 62 | GASKET,FOAM--.062X 500X22 50L | 2 |
| 63 | PANEL,LOWER FRONT--SS.38 AUTO | 1 |
| 64 | KNOB | 2 |
| 65 | SCR MACH FLAT HD 375-16X2 00L | 1 |
| 66 | ASM,COVER--BRUSH.32" AUTOS | 1 |
| 66 | COVER,BRUSH--MACHINED.38 AUTO | 1 |
| 67 | WHEEL--5.00DIA.504BORE,1.12HB | 1 |
| 68 | SPACER,STL--384X.500,1 000L,Z | 1 |
| 69 | WDMT,BAR,BUMPER WHEEL CLAMP | 1 |
| 70 | WDMT,BUMPER WHEEL MTG | 1 |
| 71 | WSHR LK 262ID 489OD.062TSPLT | 2 |
| 72 | NUT,HEX--250-20,ZN PLT | 2 |
| 73 | STR,STL--.062X 437X1 50 LONG | 12 |
| 74 | CHNL,PLSTC--750X 281.38, LONG | 1 |
| 74 | CHNL,PLSTC--750X 281.38,SHORT | 1 |
| 75 | SCR TPG F PAN HD 8-10X .562L | 12 |
| 76 | GUARD,SPLASH--12X4 50.38 AUTO | 1 |
| 77 | PANEL,SIDE--38 AUTO,RIGHT | 1 |
| 78 | SCR MACH FLAT HD .250-20X 750L | 8 |
| 79 | BAR,SPACER--27 LONG | 2 |
| 80 | PANEL,LOWER--RIGHT,AUTO'S | 1 |
| 81 | SCR MACH BTN HD 500-13X2 50L | 2 |
| 82 | WSHR FLT 500ID1 500D 125T NYL | 2 |
| 83 | SPACER,STL--506X.750,1 500L,Z | 2 |
| 84 | SWITCH,CAM 40 AMP MOTOR REV | 1 |
| 85 | BRACE,STL--CAM SWITCH ARM | 1 |
| 86 | NUT,HEX LOCK--.250-20,NYLOC,ZN | 1 |
| 87 | SPACER,PHEN--250X 500. 500L | 1 |
| 88 | SCR CAP HEX HD 250-20X1 50L | 1 |
| 89 | SCR MACH RD HD 10-32X 500L | 2 |
| 90 | SCR SET CUP PT 250-20X 250L | 1 |
| 91 | SCR MACH RD HD 250-20X 750L | 5 |
| 92 | LABEL,IDENT--KENT,AUTO,5.25X20 | 2 |
| 93 | TAPE,VINYL--BLACK,47 0CUTLNGTH | 2 |
| 94 | LABEL--RECYCLE SYMBOL | 1 |
| 95 | LABEL--RESET | 1 |

INSTRUMENT & JUNCTION PANEL ASSEMBLY KA-38ERB

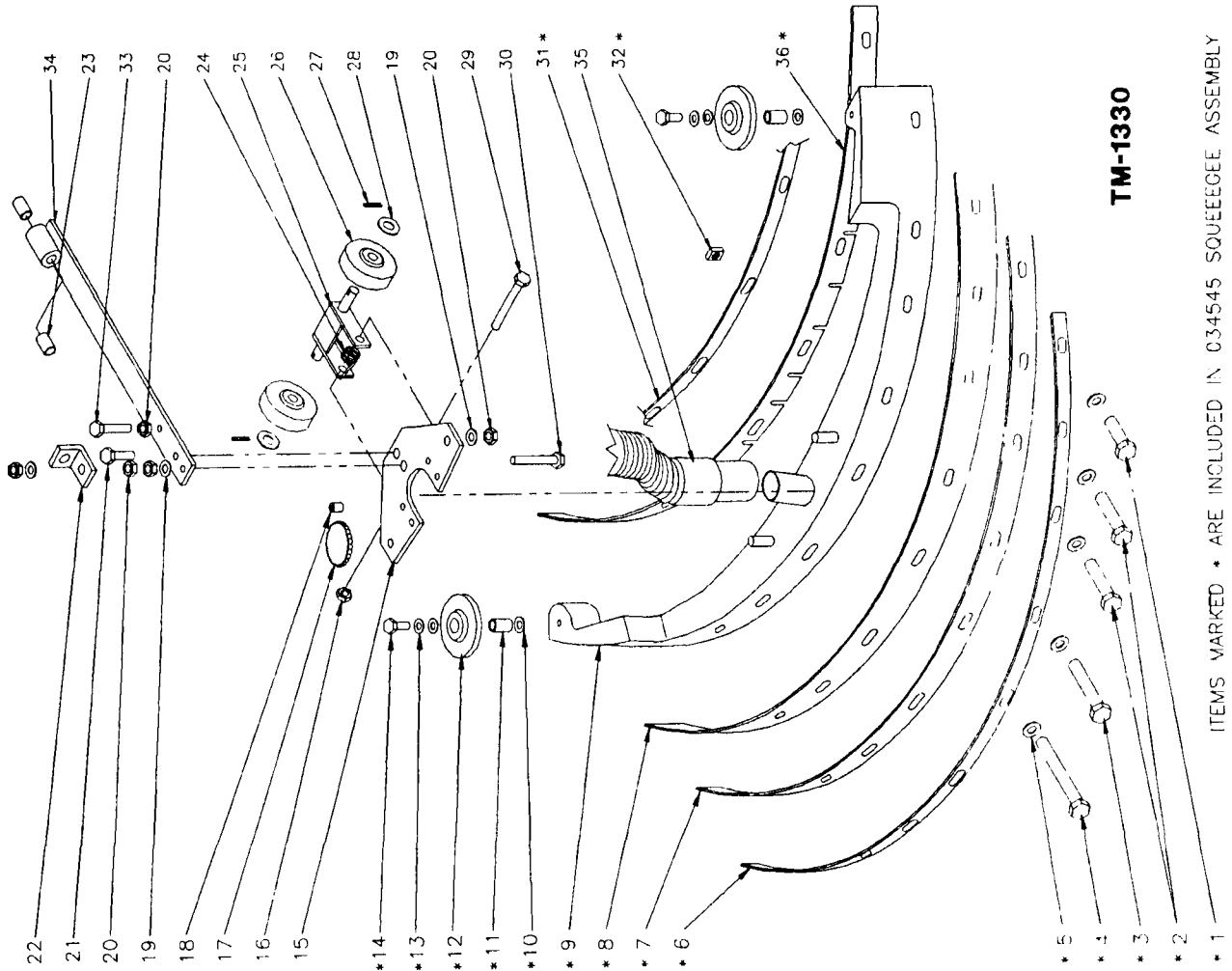


| DET PART NO. | DESCRIPTION | QUANT |
|--------------|-----------------------------------|-------|
| 1 | SWITCH PROTECTOR | 1 |
| 2 | VOLTMETER | 1 |
| 3 | ASM, SWITCH—KEYLOCK | 1 |
| 4 | LABEL, INST—KA-28RB, AUTO PANEL | 1 |
| 5 | SWITCH, TOGGLE—SPST, 10A, 250VAC | 1 |
| 6 | LIGHT, INDICATOR—RED, 36VDC | 3 |
| 7 | SWITCH, RKR—DPDT, 10A, 250V, 3/4H | 1 |
| 8 | SWITCH, RKR—DPDT, 6A, 125V | 1 |
| 9 | PANEL, INSTR—28, RCY, EL, ESC | 1 |
| 10 | U-CHNL, PLSTC—RS 98251, 7.62 L | 2 |
| 11 | SCR CAP HEX HD 250-20X1 50L | 4 |
| 12 | WSHR SHLDR 250ID 562OD 120T, NY | 4 |
| 13 | BAR, STL—187X 750X 4.00 LONG | 2 |
| 14 | SPACER, PLSTC—500X 625, 500L | 4 |
| 15 | SPACER, PHEN—250X 437, 250L | 2 |
| 16 | WSHR LK 262ID 489OD 062TSPLT | 10 |
| 17 | NUT, HEX—250-20, ZN PLT | 10 |
| 19 | SOLENOID—SWITCH, SPNO, 36VDC | 3 |
| 20 | SCR CAP HEX HD 250-20X 500L | 6 |
| 21 | SCR MACH RD HD 6-32X1 25L | 2 |
| 22 | WSHR LK .148ID, 250OD 031TSPLT | 4 |
| 23 | NUT, HEX—6-32, ZN PLT | 4 |
| 24 | CHARGER PLUG | 1 |
| 25 | PLATE, STL—JUNCTION PANEL | 1 |
| 26 | CONTROL—VOLTAGE DC | 1 |
| 27 | POTENTIOMETER | 1 |
| 28 | SCR MACH RD HD 10-24X 500L | 4 |
| 29 | NUT, HEX—10-24, ZN PLT | 4 |
| 30 | WSHR LK 204ID 4100D 025T EXT | 2 |
| 31 | AMMETER—DC, 0-50A, COLOR CODED | 1 |
| 32 | SWITCH, RKR—DPDT, 20A, | 1 |
| 33 | BOOT, SWITCH—PROTECTIVE, W/NUT | 1 |
| 34 | LABEL, MARKER—RECYCLE AUTO | 1 |
| 35 | LABEL—MINMAX-WATER | 1 |
| 36 | ASM, DISK AND LABEL—KA-32RB | 1 |
| 37 | SCR MACH PAN HD 10-24X 312L | 2 |
| 38 | LABEL, MARKER—RECYCLE AUTO | 1 |
| 39 | LABEL, RESET—RECYCLE AUTO | 1 |

KA-38ERB

TM-1329

SQUEEGEE ASSEMBLY KA-38ERB



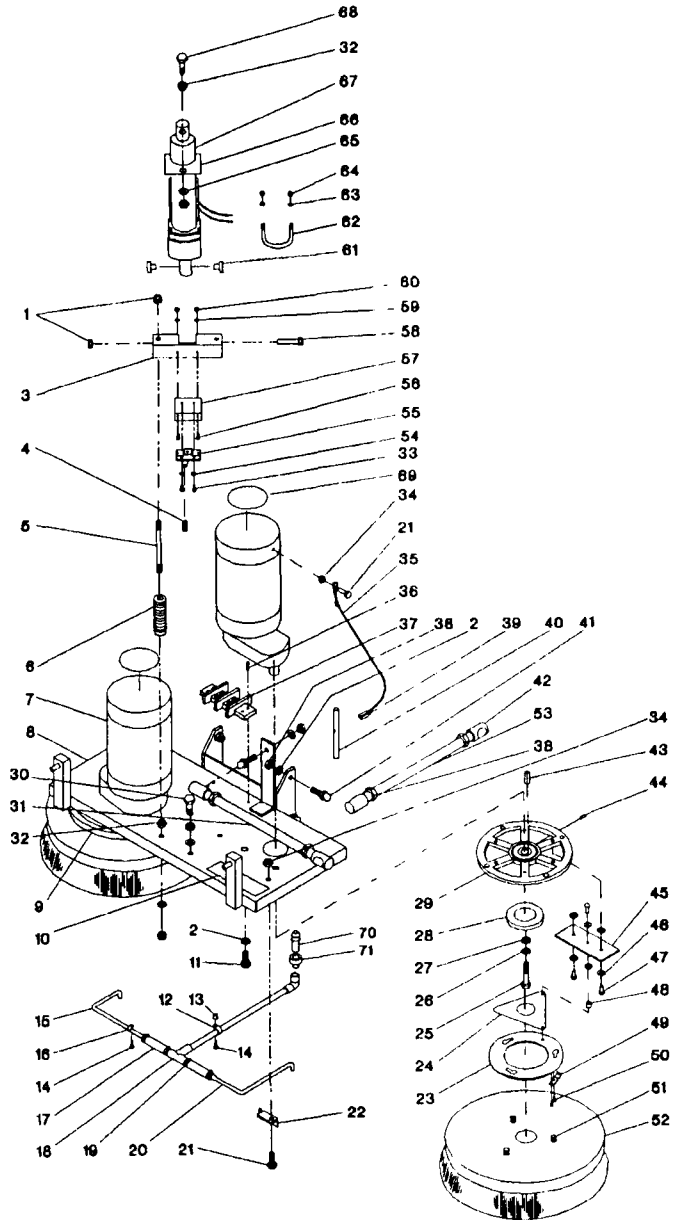
TM-1330

ITEMS MARKED * ARE INCLUDED IN 034545 SQUEEGEE ASSEMBLY

| DET PART NO. | DESCRIPTION | QUANT |
|--------------|--------------------------------|-------|
| 1 | SCR CAP HEX HD 250-20X1 50L | 2 |
| 2 | SCR CAP HEX HD 250-20X2 50L | 4 |
| 3 | SCR CAP HEX HD 250-20X3 00L | 2 |
| 4 | SCR CAP HEX HD 250-20X3 50L | 2 |
| 5 | WSHR FLT 281ID 625OD 062T STL | 10 |
| 6 | BAR, STL—125X1 00X49 13 LONG | 1 |
| 7 | RUBBER, BACKUP—38 AUTO, HV | 1 |
| 8 | RUBBER, SQUEEGEE—REAR, 38 | 1 |
| 9 | CASTING, SQUEEGEE—38 AUTO, HV | 1 |
| 10 | WSHR FLT 344ID 750OD 060T STL | 4 |
| 11 | SPACER, STL—312X 437, 43L | 2 |
| 12 | WHEEL—4 00DIA, 438BORE, 688HB | 2 |
| 13 | WSHR LK 326ID 586OD 078TSPLT | 2 |
| 14 | SCR CAP HEX HD 312-18X1 00L | 2 |
| 15 | WDMT, PLATE—SQUEEGEE | 1 |
| 16 | NUT, HEX LOCK—375-16, ZN PLT | 1 |
| 17 | KNOB | 2 |
| 18 | SCR SET CUP PT 375-16X 500L | 4 |
| 19 | WSHR LK 390ID 683OD 094TSPLT | 3 |
| 20 | NUT, HEX JAM—375-16, ZN PLT | 5 |
| 21 | SCR CAP HEX HD 375-16X1 00L | 1 |
| 22 | BRACKET, ANGLE—1 25X1 25X1 00L | 1 |
| 23 | BRG, SLV—500ID, 625OD, 750W | 4 |
| 24 | SPRING, TRSN 791D 1 09L 106WD | 1 |
| 25 | WDMT, BRACKET—SQUEEGEE | 1 |
| 26 | WHEEL—3 00DIA, 380BORE, 875HB | 2 |
| 27 | PIN, COTTER—094X1 000 LONG | 2 |
| 28 | WSHR FLT 406ID 625OD 036T STL | 2 |
| 29 | SCR CAP HEX HD 375-16X2 75L | 1 |
| 30 | SCR CAP HEX HD 375-16-2 50L | 1 |
| 31 | BAR, STL—125X1 00X45 13 LONG | 1 |
| 32 | NUT, SELF RETAINING—250-20 | 10 |
| 33 | SCR CAP HEX HD 375-16X2 25L | 1 |
| 34 | WDMT, SQUEEGEE BAR—PIVOT | 1 |
| 35 | ASM, HOSE—VACUUM, GREY, 54" | 1 |
| 36 | RUBBER, SQUEEGEE—FRONT, 38 | 1 |

| DET PART NO. | DESCRIPTION | QUANT |
|--------------|---------------------------------------|-------|
| 1 | 005279 NUT,HEX LOCK— 375-16,NYLOC | 3 |
| 2 | 004214 WSHR LK 390ID 683OD,094TSPLT | 10 |
| 3 | 034449 WDMT,BRACKET—,BRUSH LIFT | 14 |
| 4 | 046648 SPRING,COMP 344D .687L .032WD | 1 |
| 5 | 048946 STUD—,375-16X4,37L STL | 2 |
| 6 | 054427 SPRING,COMP—1 09D 2 50L 135WD | 2 |
| 7 | 024360 ASM,MOTOR&GEAR UNIT—1 0HP | 2 |
| 7 | 039135 BRUSH,MTR—FOR 024360 MTR | 4 |
| 8 | 034533 WDMT,BRUSH HEAD—38 AUTO,W/EL | 1 |
| 9 | 033996 ASM,HUB—BRUSH DRIVE,RIGHT | 1 |
| 10 | 051549 LABEL,INSTR—WRN,AUTO | 1 |
| 11 | 003262 SCR CAP HEX HD .375-16X1 00L | 7 |
| 12 | 051474 CLAMP,LOOP—,609 CLOSED I.D. | 1 |
| 13 | 046425 SPACER,PHEN—,250X 437, .250L | 1 |
| 14 | 001331 SCR TPG C PAN HD 10-24X 750L | 3 |
| 15 | 055297 TUBE,FORMED—AUTO,SOLN,RIGHT | 1 |
| 16 | 051466 CLAMP,LOOP— 297 CLOSED I D | 2 |
| 17 | 051514 TUBE,VINYL—,500X,750, 2 25L | 2 |
| 17 | 055299 TUBE,VINYL— 313X,500,3 50L | 2 |
| 18 | 034407 ASM,TUBE—SOLN,CNTR FEED,38' | 1 |
| 19 | 047834 CLAMP,HOSE— 875 MAX DIA,WORM | 4 |
| 20 | 055298 TUBE,FORMED—AUTO,SOLN,LEFT | 1 |
| 21 | 002237 SCR CAP HEX HD 250-20X 500L | 4 |
| 22 | 053277 BRACKET,SOLN TUBE—,75X 75X1.8 | 2 |
| 23 | 032231 ASM,DRIVE—BRUSH,RIGHT | 1 |
| 23 | 032232 ASM,DRIVE—BRUSH,LEFT RING | 1 |
| 23 | 046740 RING-BRUSH DRIVE | 2 |
| 24 | 048414 PLATE-BRUSH RING SUPPORT | 2 |
| 25 | 001494 SCR CAP HEX HD 312-18X2 00L | 2 |
| 26 | 005358 WSHR LK—,326ID 586OD 078T SPL | 2 |
| 27 | 004509 WSHR FLT 344ID1.00OD 109T,BRS | 2 |
| 28 | 046764 BRUSH SUPPORT | 2 |
| 29 | 033995 ASM,HUB—BRUSH DRIVE,LEFT | 1 |
| 29 | 053221 CASTING—BRUSH DRIVE W/CENTER | 2 |
| 30 | 002332 SCR CAP HEX HD .375-16X1 75L | 1 |
| 31 | 034484 ASM,ARM—W/BALL JOINTS,32 AUTO | 1 |
| 32 | 003294 NUT,HEX JAM— 375-16,ZN PLT | 7 |
| 33 | 001248 SCR MACH RD HD 6-32X1 00L | 2 |
| 34 | 003363 NUT,HEX LOCK— 250-20,ZN PLT | 4 |
| 35 | 053793 WIRE ROPE— 062 DIA X 10.50L | 2 |
| 36 | 005482 SCR TPG F PAN HD 10-24X 875L | 4 |
| 37 | 026922 BLOCK,TERMINAL—2 POLE,70 AMPS | 1 |
| 38 | 003359 NUT,HEX— 375-24,ZN PLT | 12 |
| 39 | 004352 PIN,LOCK—,125 DIA WIRE | 2 |
| 40 | 051486 PIN,STEEL— 375" BRUSH LOCK | 2 |
| 41 | 048953 BALL JOINT | 4 |
| 42 | 049473 BALL JOINT BODY | 8 |
| 43 | 044656 KEY,SQUARE— 250 SQ,2 500 LONG | 2 |
| 44 | 003434 SCR SET CUP PT 10-24X 50SS | 2 |
| 45 | 049631 STRAP-BRUSH RING | 6 |
| 46 | 004513 WSHR FLT .281 ID,875OD 036T ZN | 36 |
| 47 | 004326 RIVET,TUBE— 250 DIA, .719L | 18 |
| 48 | 046425 SPACER,PHEN— 250X,437, .250L | 6 |
| 49 | 046898 SPRING-RETAINING | 2 |
| 50 | 004328 RIVET,TUBE— 141 DIA, 281L | 4 |
| 51 | 046746 BRUSH LUG | 6 |
| 52 | 020367 BRUSH,FLAT—20 00D,POLYPROP,WD | 2 |
| 53 | 033809 ASM,ARM—GUIDE 26&32 BRUSH HD | 4 |
| 53 | 052683 ROD STL—THR , 375-24X4 18L | 4 |
| 54 | 004200 WSHR FLT 156ID 375OD 065T BRS | 1 |
| 55 | 026515 SWITCH,PUSH—SPDT,21A,240V | 1 |
| 56 | 005316 SCR TPG F PAN HD 10-24X 375L | 2 |
| 57 | 054507 BRACKET,STL—SWITCH,LOWER LIM | 1 |
| 58 | 002445 SCR CAP HEX HD 375-16-2 50L | 1 |
| 59 | 004250 WSHR LK 148ID 250OD 031TSPLT | 2 |
| 60 | 003274 NUT,HEX— 6-32,ZN PLT | 2 |
| 61 | 054502 BSHG,SLV— 377ID 498OB1 00FLNG | 2 |
| 62 | 005592 BOLT,U—10-24,1 125R,3 00L | 1 |
| 63 | 005297 WSHR LK 200ID 334OD 047TSPLT | 2 |

BRUSH HEAD ASSEMBLY KA-38ERB



TM-1932

•ENTIRE ASSEMBLY IS PART NO. 034532
(DOES NOT INCLUDE BRUSHES)

| DET PART NO. | DESCRIPTION | QUANT |
|--------------|--------------------------------------|-------|
| 64 | 003279 NUT,HEX— 10-24,ZN PLT | 2 |
| 65 | 004215 WSHR LK 398ID 694OD 040T EXT | 1 |
| 66 | 054499 BRACKET,U—3 25X3 87X 75 | 1 |
| 67 | 024368 ACTUATOR,DC—36V,500LBS,6IN | 1 |
| 68 | 003265 SCR CAP HEX HD 375-16X1 50L | 1 |
| 69 | 050959 LABEL,IDENT—WHT CIRCLE 4 5DIA | 2 |
| 70 | 055524 ADPTR,PP-HS—1/2MPT X 3/8HS,N | 1 |
| 71 | 055462 ADAPTER—1/2P X 1/2IPT | 1 |

THE KENT LIMITED WARRANTY

Your Kent equipment which has been manufactured, tested and inspected in accordance with carefully specified engineering requirements, is warranted to be free from defects in material and workmanship. This warranty is, however, subject to the following qualifications, conditions, and limitations which are set forth to provide you and all users of the Kent equipment with information concerning the duration, extent, availability, and applicability of this Kent limited warranty, the procedure to be taken to obtain its performance, and other information concerning the Kent warranty policy.

The Kent Limited Warranty is extended to the original end user as follows:

Automatic scrubber vacs and battery operated burnishers 3 year parts replacement and 1 year service labor warranty (see instruction manual for battery guarantee). Battery chargers are guaranteed by charger manufacturer for a period of 1 year

Replacement parts guaranteed for 90 days from date of installation against defects in material and workmanship.

The 10 year poly component replacement warranty with 1 year service labor extends for a period of ten (10) years from the date of the original purchase of the Kent equipment by the original purchaser. This warranty will not cover damage attributable to the following:

- (1) Improper, unreasonable or negligent use or abuse of the equipment
- (2) Use of equipment with hot water or high temperature above 130 degrees Fahrenheit (54 degrees centigrade)
- (3) "Warpage", "Creepage", or "Distortion" of part so long as the same does not interfere with normal operation
- (4) Abrasions or punctures of the equipment

The start date of the warranty coverage shall be the purchase date of the original end user or six months from the date the machine was shipped from the factory, whichever comes first

PARTS OF KENT EQUIPMENT NOT COVERED BY WARRANTY

Certain parts of Kent equipment require replacement in the ordinary course of use due to normal wear by reason of their characteristics. These are normal wear items such as cords, gaskets, switches, bumpers, carbon brushes, handle grips, bags, hoses, bearings, etc.

EXCEPTIONS AND EXCLUSIONS FROM WARRANTY

This equipment is required to be used on electric current as indicated on the data plate. Otherwise damage, defects, malfunctions or other failures of the equipment arising from use on electric current not as indicated are excepted and excluded from this warranty. Defects, malfunctions, failure or damage of the equipment caused by improper, unreasonable or negligent use or abuse while in the possession of the purchaser are likewise excluded from this warranty. If repair is done on your equipment by anyone other than those designated as authorized to perform such work without first having obtained factory instructions, The Kent Company, at its sole option, may determine that this warranty will not apply and that reimbursement for such repair will not be made because of the failure to comply with such factory specified instructions

PROCEDURE TO BE TAKEN TO OBTAIN PERFORMANCE OF WARRANTY REPAIR

To secure repair of the equipment or any warranted parts under this warranty, the following procedure should be taken. The inoperative equipment or warranted parts, together with satisfactory evidence of the purchase date, must be delivered, with shipping and delivery charges prepaid, to one of the following:

- (1) The dealer from whom purchased,
- (2) Any Kent distributor's service department in the United States,
- (3) Any Kent authorized service station in the United States

If you are unable to locate any of the foregoing, you may write or otherwise communicate with The Kent Company for instructions before repair service is performed by anyone else. In such event, The Kent Company will provide either the location of a closely available Kent distributor service department or Kent authorized service station or other factory instructions. Upon compliance with the above procedure, all warranted defects will be repaired, at no additional charge or costs to the customer, and the repaired product returned to the customer, with all shipping and delivery charges prepaid. In following the procedures above set forth, PLEASE MAKE CERTAIN to state the Kent model, type and serial number as shown on the dataplate of the equipment

REPLACEMENT

In the event of a defect, malfunction or failure of your Kent equipment or any warranted part to conform with this warranty, The Kent Company may, at its sole option and own expense, replace the equipment or any warranted part with another new identical or reasonably equivalent model or part in lieu of repairing the defect

NO REFUND OF PURCHASE PRICE

The Kent Company will not, as a matter of its warranty policy, refund the customer's purchase price

WARRANTY REGISTRATION CARD FOR YOUR KENT EQUIPMENT AND REQUEST FOR INFORMATION

Your Kent Company distributor from whom you purchased your equipment is responsible for the registration of your warranty with the factory. We ask that you cooperate with your distributor in supplying the necessary information on the warranty card so that we may better serve you. Any information or questions you may have concerning your Kent equipment or this warranty may likewise be secured from the factory. This warranty gives you specific legal rights, and you may also have other rights which vary from state to state.

THE KENT COMPANY

P.O. BOX 1665 ELKHART, INDIANA 46515